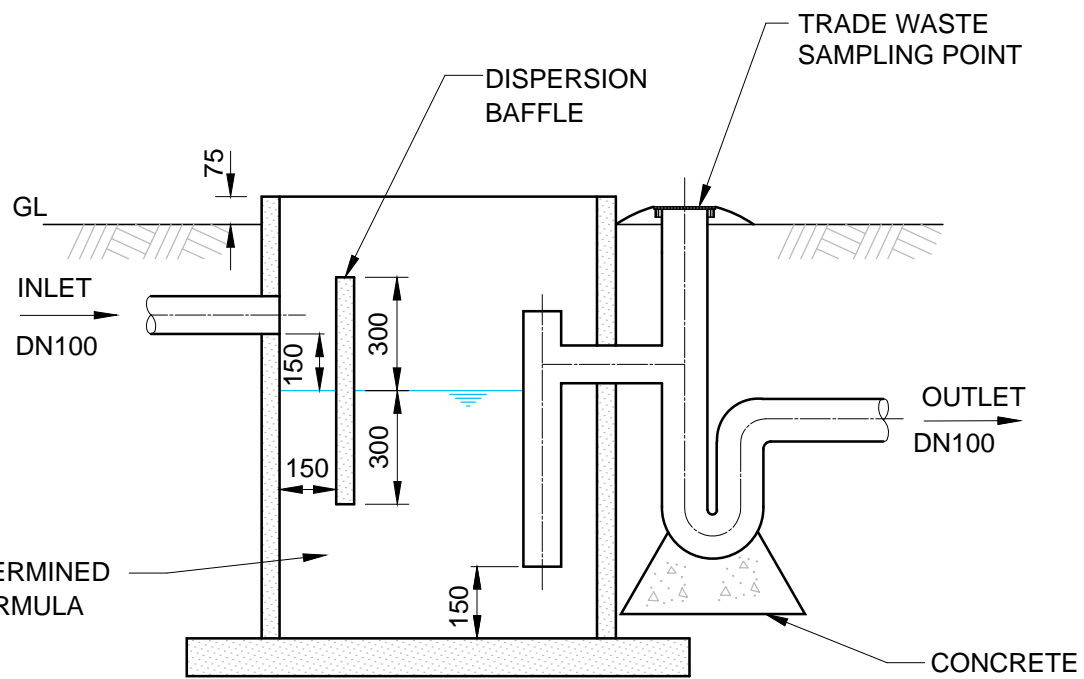


NOTES

1. CONSTRUCTION OF THE PIT SHALL BE OF REINFORCED CONCRETE OR OTHER APPROVED MATERIAL. CAN BE EITHER RECTANGULAR OR CIRCULAR.
2. THE LID SHALL BE CONSTRUCTED OF GALVANIZED OPEN GRATING WITH A RAISED SURROUND OF NOT LESS THAN 75MM ABOVE GROUND LEVEL. IF LOCATED IN SEALED AREA THE PIT MAY BE FINISHED FLUSH WITH THE FINISHED FLOOR LEVEL, BUT MUST GRADE AWAY MINIMUM OF 25MM IF LOCATED OUTSIDE.
3. ALL FIXINGS AND FIXING BRACKETS FOR BAFFLE MUST ME MADE OF 316 STAINLESS STEEL.
4. THE DISPERSION BAFFLE SHALL BE MADE OF MATERIAL SO THAT IT DOES NOT DISTORT FROM THE HEAT.
5. ALL DIMENSIONS SHOWN ARE IN MILLIMETRES.



SIZING FORMULA

$$V = V_H + V_H \times F \qquad F = \frac{T_H - T_A}{T_A - T_C}$$

V = THE MINIMUM VOLUME OF THE PIT BELOW THE WATER LEVEL.
 V_H = ESTIMATED VOLUME OF HOT WATER DISCHARGED AT ONE TIME.
 F = THE ESTIMATED FACTOR.
 T_H = MAXIMUM TEMPERATURE OF HOT WATER DISCHARGED INTO THE PIT.
 T_C = ASSUMED TEMPERATURE OF COLD WATER IN THE PIT, SAY 20°C
 T_A = TEMPERATURE OF WASTE ALLOWED INTO THE SEWER OF 38°C.

**THESE STANDARD DRAWINGS ARE PROVIDED AS A GUIDE.
 THE DESIGNER SHOULD ENSURE THAT THE PRETREATMENT SOLUTION IS
 DESIGNED TO ENSURE COMPLIANCE WITH TASWATER DISCHARGE QUALITY
 REQUIREMENTS AND ALL OTHER REGULATORY REQUIREMENTS**

TO BE READ IN CONJUNCTION WITH TASWATER PRETREATMENT GUIDELINES

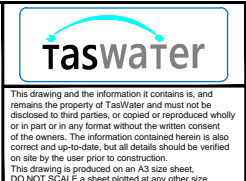
Revision Notes				
1 - GENERAL UPDATE. SEE HPE RECORD NO. 19/136338				
B - INITIAL ISSUE				
Rev.	1	Date	13/11/19	Approved
				Greg Cooper



Scale	NTS
Datum	-
Sheet Size	A3
References	

Drawn	PH	24/9/2015
Designed	GC	24/9/2015
Verified	AD	6/10/2015
Project No.	-	Discipline
Vault Folder	© 2015	
HPRM File Ref.	T15/161-002-0001	

DRAWING ISSUE
**NOT FOR
 CONSTRUCTION**



TASWATER STANDARD DRAWING TRADE WASTE TYPICAL DRAWING COOLING PIT / BOILER BLOWDOWN			
TASMANIAN WATER & SEWAGE CORPORATION PTY LTD ABN: 47 162220 653		Sheet Number TWS-C-0001 10	REVISION 1