

NOTES

1. LINT SCREENS AND BASKETS ARE TO BE SIZED APPROPRIATELY TO FLOW RATES FROM LAUNDRY AT THE DESIGN STAGE BY A HYDRAULIC CONSULTANT.
2. COOLING PITS ARE TO BE INSTALLED TO REDUCE THE TEMPERATURE OF WASTE TO 38° C. REFER TO TYPICAL DRAWING TWS-C-0001-12.
3. ALL LAUNDRY WASTE ARE TO DISCHARGE VIA TRADE WASTE SAMPLING POINT.
4. LARGE SCALE LAUNDRIES MAY REQUIRE PH DOSING TO ACHIEVE DISCHARGE TO SEWER.

**THESE STANDARD DRAWINGS ARE PROVIDED AS A GUIDE.
 THE DESIGNER SHOULD ENSURE THAT THE PRETREATMENT SOLUTION IS
 DESIGNED TO ENSURE COMPLIANCE WITH TASWATER DISCHARGE QUALITY
 REQUIREMENTS AND ALL OTHER REGULATORY REQUIREMENTS**

TO BE READ IN CONJUNCTION WITH TASWATER PRETREATMENT GUIDELINES

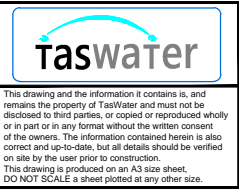
Revision Notes				
1 - GENERAL UPDATE. SEE HPE RECORD NO. 19/136338				
B - INITIAL ISSUE				
Rev.	1	Date	13/11/19	Approved
				Greg Cooper



Scale	NTS
Datum	-
Sheet Size	A3
References	

Drawn	PH	24/9/2015
Designed	GC	24/9/2015
Verified	AD	6/10/2015
Project No.	-	Discipline
Vault Folder	© 2015	
HPRM File Ref.	T15/161-002-0001	

DRAWING ISSUE
NOT FOR CONSTRUCTION



TASWATER STANDARD DRAWING			
TRADE WASTE TYPICAL DRAWING			
COMMERCIAL LAUNDRIES			
TASMANIAN WATER & SEWAGE CORPORATION PTY LTD ABN: 47 162220 653		Sheet Number	REVISION
		TWS-C-0001	11 1