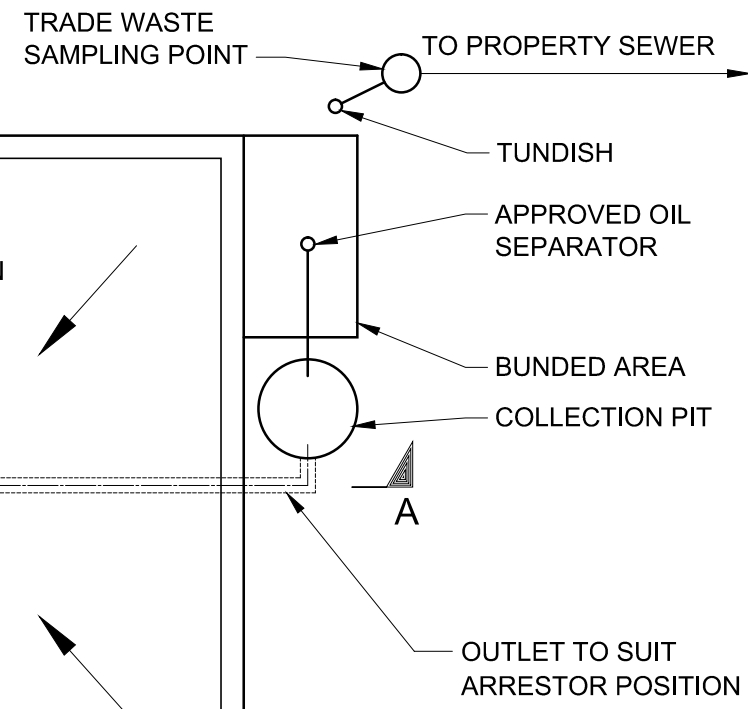
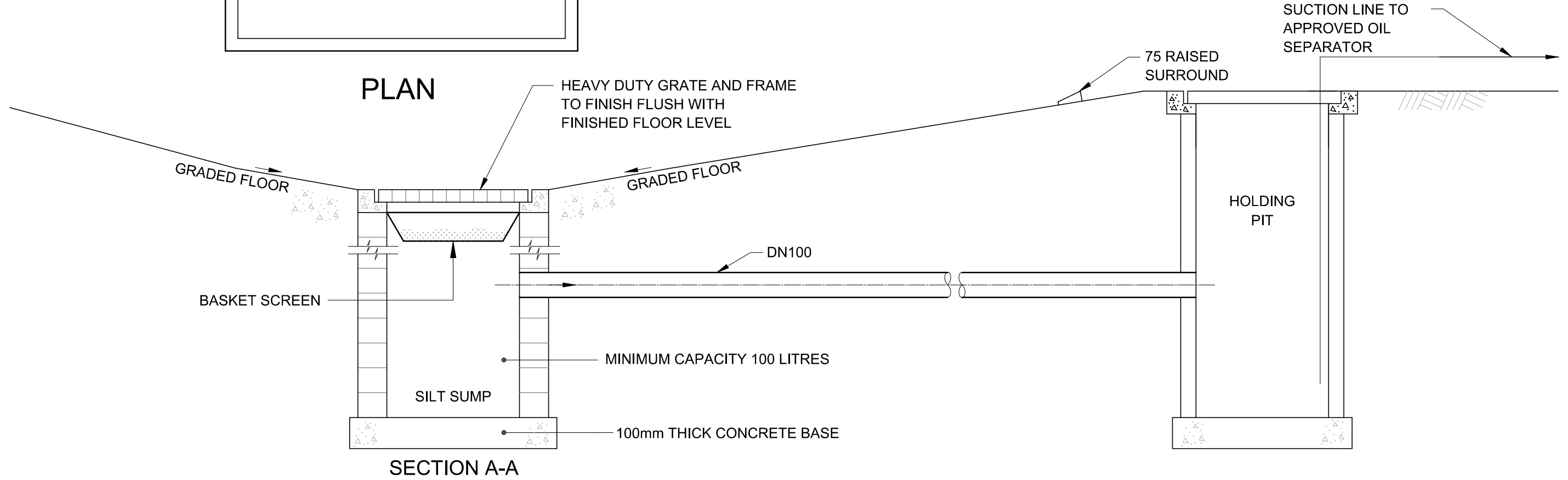


STANDARD REQUIREMENTS FOR DISCHARGE TO SEWER

1. WASHDOWN AREAS GREATER IN SIZE THAN 20 SQUARE METRES MUST BE ROOFED.
2. ALL SILT SUMP DESIGNS WILL BE CONSIDERED, HOWEVER, THEY MUST BE A MINIMUM OF 100 LITRES IN EFFECTIVE CAPACITY.
3. TRADE WASTE SAMPLING POINTS SHALL BE INSTALLED DOWNSTREAM OF OIL SEPARATORS.
4. ALL MEASUREMENTS SHOWN ARE IN MILLIMETRES.
5. SILT SUMPS ARE NOT RECOMMENDED TO BE USED AS COLLECTION/PUMP PITS.
6. THE CAPACITY OF THE COLLECTION PIT TO BE EQUAL TO 8. OR GREATER THAN THE SEPARATOR.



PLAN



SECTION A-A

TO BE READ IN CONJUNCTION WITH TASWATER PRETREATMENT GUIDELINES

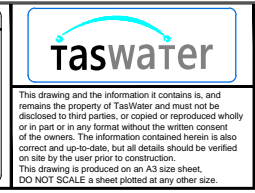
Revision Notes					
Rev.	B	Date	6/10/2015	Approved	AD
B - INITIAL RELEASE					



Scale	NTS
Datum	-
Sheet Size	A3
References	

Drawn	PH	24/9/2015
Designed	GC	24/9/2015
Verified	AD	6/10/2015
Project No.	-	Discipline
Vault Folder	© 2015	
HPRM File Ref.	T15/161-002-0001	

DRAWING ISSUE
NOT FOR CONSTRUCTION



TASWATER STANDARD DRAWING			
TRADE WASTE TYPICAL DRAWING			
EXTERNAL MECHANICAL WASHDOWN AREA WITH SILT SUMP			
TASMANIAN WATER & SEWAGE CORPORATION PTY LTD ABN: 47 162220 653		Drawing Number TWS-C-0001	Revision Sheet Number 5 Revision B