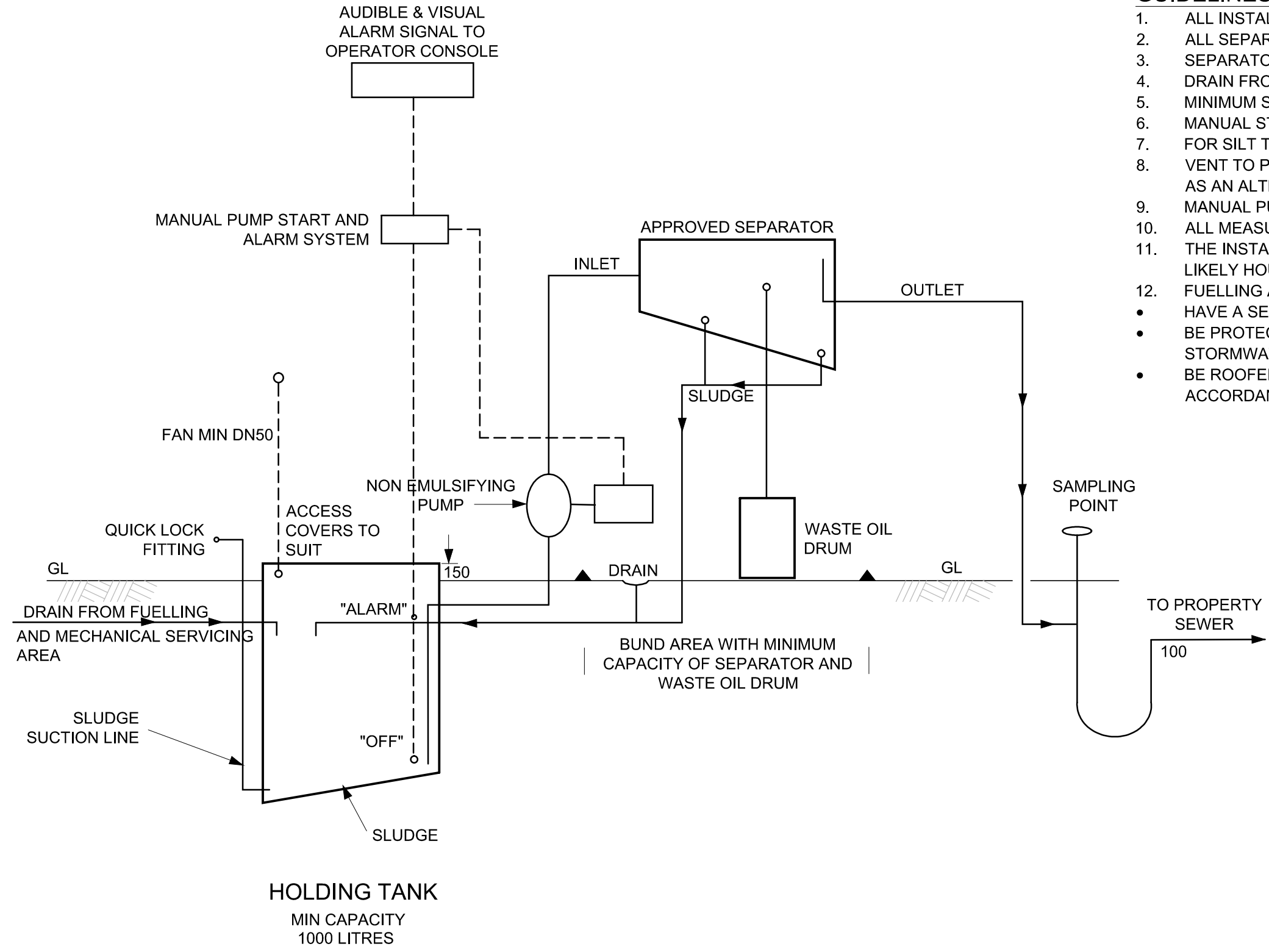


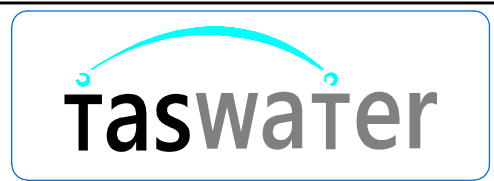
GUIDELINES

1. ALL INSTALLATIONS REQUIRE A TRADE WASTE PERMIT.
2. ALL SEPARATORS ARE TO BE SIZED ACCORDING TO RATE OF FLOW.
3. SEPARATORS TO BE INSTALLED IN A BUNDED AREA.
4. DRAIN FROM BUNDED AREA TO DISCHARGE TO HOLDING TANK.
5. MINIMUM SIZE OF SAMPLING POINT TO BE DN100.
6. MANUAL START AND AUTOMATIC SHUT OFF FOR PUMP.
7. FOR SILT TRAPS REFER TO TYPICAL DRAWING TWS-C-0001-5.
8. VENT TO PUMP PIT CAN BE TAKEN OFF INLET PIPE WORK TO PUMP PIT AS AN ALTERNATIVE.
9. MANUAL PUMP START TO BE LOCATED ADJACENT TO HOLDING TANK.
10. ALL MEASUREMENTS SHOWN ARE IN MILLIMETRES.
11. THE INSTALLATION MUST BE SIZED ACCORDING TO THE MAXIMUM LIKELY HOURLY FLOW RATE AS ACCEPTED BY TASWATER.
12. FUELLING AND MECHANICAL SERVICING AREA IS TO:
 - HAVE A SEALED PAVEMENT.
 - BE PROTECTED FROM STORMWATER INFILTRATION VIA A SUITABLE STORMWATER DIVERSION DRAIN.
 - BE ROOFED WITH A 10° ROOF OVERHANG FROM THE CUT OFF DRAIN IN ACCORDANCE WITH THE TASMANIAN PLUMBING CODE.



TO BE READ IN CONJUNCTION WITH TASWATER PRETREATMENT GUIDELINES

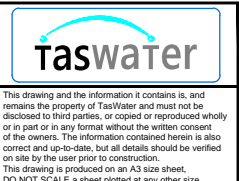
Revision Notes					
Rev.	B	Date	6/10/2015	Approved	AD
B - INITIAL RELEASE					



Scale	NTS
Datum	-
Sheet Size	A3
References	

Drawn	PH	24/9/2015
Designed	GC	24/9/2015
Verified	AD	6/10/2015
Project No.	-	Discipline
Vault Folder	© 2015	
HPRM File Ref.	T15/161-002-0001	

NOT FOR CONSTRUCTION



TASWATER STANDARD DRAWING TRADE WASTE TYPICAL DRAWING FUELLING AREAS - SERVICE STATIONS			
TASMANIAN WATER & SEWAGE CORPORATION PTY LTD ABN: 47 142220 653		Drawn Number TWS-C-0001	Sheet Number 6 REVISION B