

SINK

SINK PLUG

BACK NUT

REMOVABLE PRIMARY STRAINER BASKET WITH Ø3mm HOLES

FIXED SECONDARY STRAINER Ø3mm HOLES

Ø50

GUIDELINE FOR STRAINER UNITS

1. SINK STRAINER UNITS OR SIMILAR APPROVED UNITS ARE RECOMMENDED AND MAY BE REQUIRED TO BE FITTED TO SINKS IN COMMERCIAL OPERATIONS. i.e. FOOD PRODUCTION OR PREPARATION AREAS.
2. PRIMARY STRAINER UNITS ARE TO BE FABRICATED FROM STAINLESS STEEL PERFORATED METAL OR MESH, WITH A MAXIMUM OF 3mm OPENINGS.
3. FIXED SECONDARY STRAINERS ARE TO BE FABRICATED FROM STAINLESS STEEL PLATE WITH 3mm HOLES.
4. SINK STRAINER UNITS CAN BE RETROFITTED TO SINKS.
5. ALL MEASUREMENTS SHOWN ARE IN MILLIMETRES.

TO BE READ IN CONJUNCTION WITH TASWATER PRETREATMENT GUIDELINES

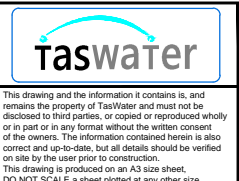
Revision Notes					
B - INITIAL RELEASE					
Rev.	B	Date	6/10/2015	Approved	AD



Scale	NTS
Datum	-
Sheet Size	A3
References	

Drawn	PH	24/9/2015
Designed	GC	24/9/2015
Verified	AD	6/10/2015
Project No.	-	Discipline
Vault Folder	© 2015	
HPRM File Ref.	T15/161-002-0001	

DRAWING ISSUE
NOT FOR CONSTRUCTION



TASWATER STANDARD DRAWING TRADE WASTE TYPICAL DRAWING SINK STRAINER UNITS			
TASMANIAN WATER & SEWAGE CORPORATION PTY LTD ABN: 47 162220 653	Drawn Number TWS-C-0001	Sheet Number 3	REVISION B