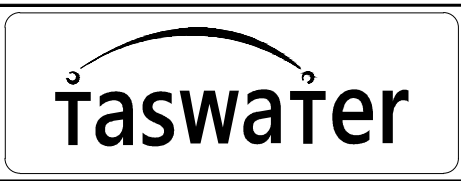


- INSTALLATION INSTRUCTIONS
1. IDENTIFY REQUIRED CABLE LENGTH FROM DESIGN DATA, MEASURE OUT AND MARK WITH WHITE TAPE.
  2. HANG FLOAT OR SENSOR INTO WET WELL WITH WHITE TAPE AT TOP OF CONCRETE AND ATTACH CABLE HANGER TO CABLE.
  3. ONCE IN POSITION ATTACH CABLE TIE TO CABLE TO IDENTIFY TOP OF CLAMP POSITION.
  4. ONCE IN CORRECT POSITION ATTACH CABLE TIE TO CABLE CLAMP TO ENSURE CLAMP CAN NOT RELEASE.
  5. RECORD INSTALLED LENGTHS ON WET WELL LEVEL DRAWING.
  6. ELECTRICALLY CONNECT EQUIPMENT AS SHOWN IN ELECTRICAL DRAWINGS.

TRIM REF: ASW13/19319 [V2]

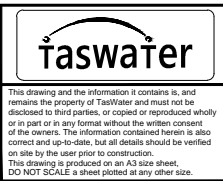
Revision Notes					
Direct copy of Southern Water dwg SW-SD-S-13 rB					
Rev.	A	Date	13/10/2015	Approved	S. Dadswell



Scale	Scale
Datum	AHD (Tas.)
Sheet Size	A3
References	

Drawn	T. Peebles	13/10/2015
Designed	S. Dadswell	13/10/2015
Verified	R. Witek	13/10/2015
Project No.	J15152	Discipline E
Vault Folder	STANDARDS	© 2015
HPRM File Ref.	15/173296	

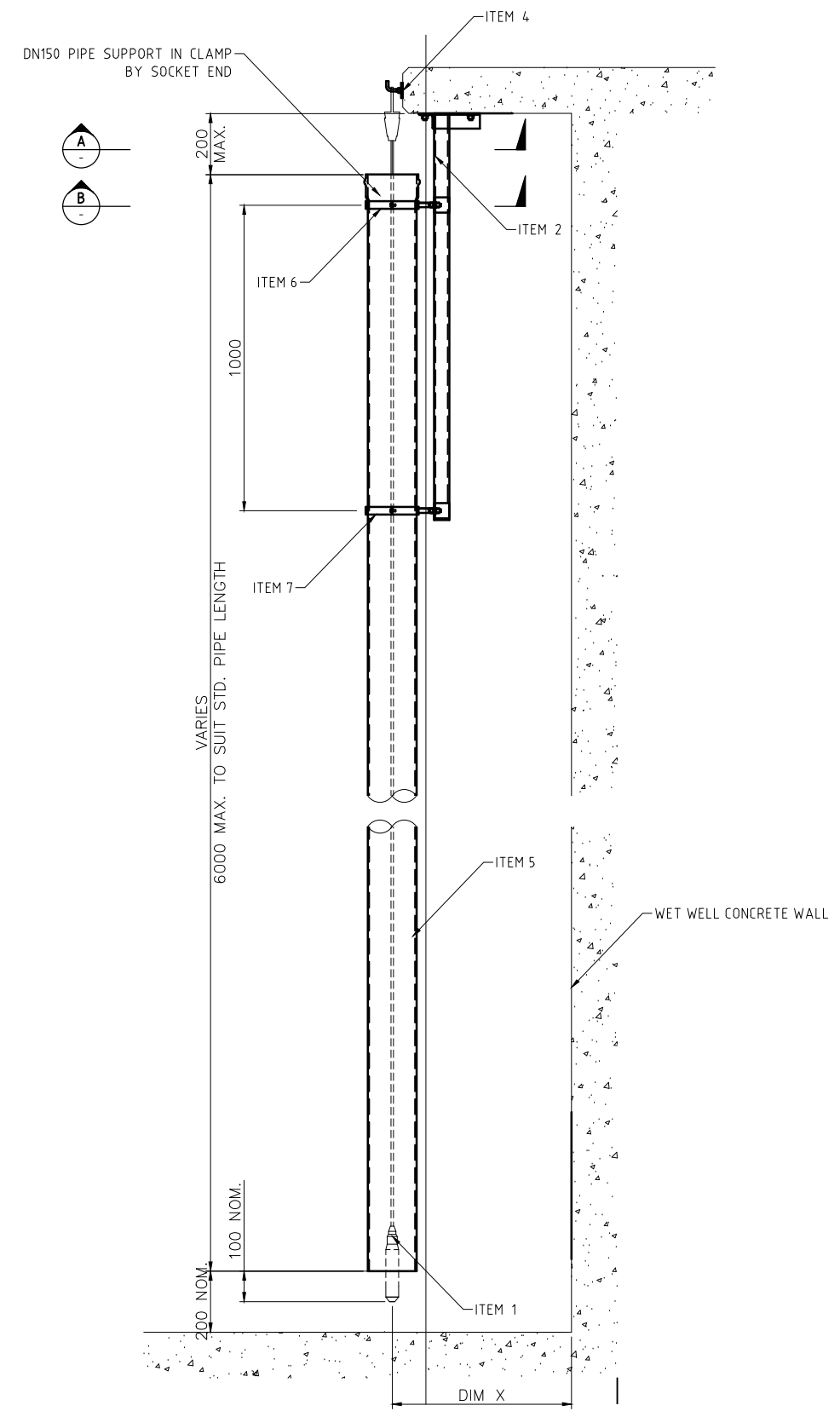
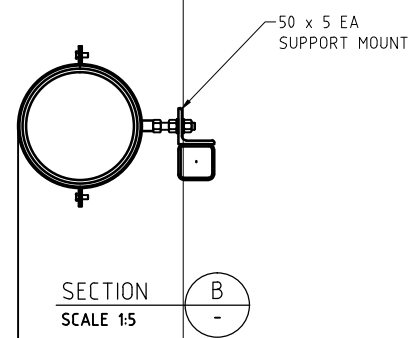
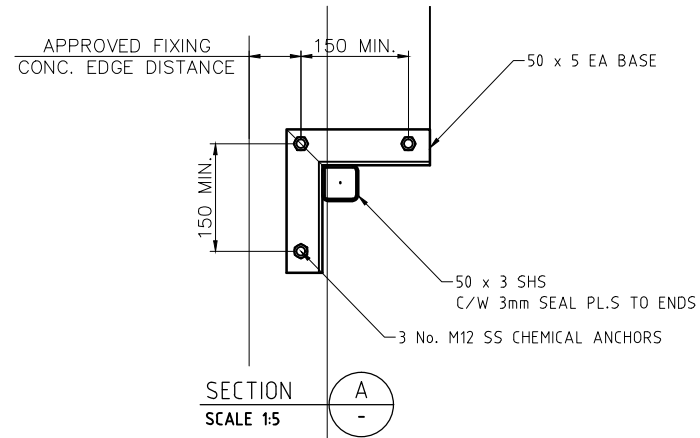
DRAWING ISSUE  
**NOT FOR CONSTRUCTION**



TASWATER STANDARD DRAWING			
SEWAGE PUMP STATION			
LEVEL SENSOR AND FLOAT SWITCHES			
INSTALLATION DETAILS			
TASMANIAN WATER & SEWAGE CORPORATION PTY LTD ABN: 47 162220 653		Sheet Number TWS-E-0008 01	Revision A

1 2 3 4 5 6

A  
B  
C  
D  
E  
F  
G  
H



**NOTE**  
ALL MATERIAL SHALL BE GRADE 316 STAINLESS STEEL U.N.O.

- INSTALLATION INSTRUCTIONS**
1. CONFIRM THE WET WELL ROOF CAN PROVIDE SUITABLE SUPPORT FOR THE INSTALLATION.
  2. STILLING TUBE LOCATION TO BE AWAY FROM PUMP INTAKE.
  3. CUT STILLING TUBE LENGTH TO SUIT & ADD FLANGE.
  4. INSTALL SUPPORT BRACKETS, SUPPORT & GUIDE TO SUIT APPLICATION & SITE.
  5. LOCATE STILLING TUBE IN SUPPORT & GUIDE.
  6. HANG LEVEL SENSOR AS DESCRIBED ON SHEET 1
  7. ENSURE THAT LEVEL SENSOR CABLE DOES NOT CHAFE ON SIDE OF STILLING TUBE.

ITEM SCHEDULE		
ITEM No.	No. OFF	DESCRIPTION
1	1	HYDROSTATIC LEVEL SENSOR
2	1	SUPPORT BRACKET 1. FULLY WELDED 50 x 5 316 SS SHS CONSTRUCTION C/W SS CHEMICAL ANCHORS TO CONCRETE ROOF. REFER TYPICAL DETAILS. FINAL DETAILS TO SUIT STILLING TUBE LOCATION & EXIST. WET WELL ROOF
3	1	SUPPORT BRACKET 2. 25 x 5 SS316 EA CONSTRUCTION C/W SS CHEMICAL ANCHORS TO CONCRETE WALL. DETAILS TO SUIT STILLING TUBE OFFSET FROM WALL (DIM. X)
4	1	LEVEL SENSOR & FLOAT BRACKET, REFER DWG. SW-SD-S-21
5	1	STILLING PIPE, DN 150 PVC-M SERIES 1 PIPE, 160mm OD
6	1	STILLING TUBE SUPPORT, "EZYSTRUT" E7 VARIABLE 'D' SS, E7-165-169 OR APPROVED EQUIVALENT, C/W SS BACKING PLATE & 1 No. M10 SS BOLT TO SUPPORT BRACKET. LOOSE FIT, DO NOT OVER TIGHTEN, PACK CLAMP IF REQD.
7	1	STILLING TUBE GUIDE, FABRICATED GUIDE RING OR PROPRIETARY GRADE 316 SS CLAMP, C/W SS BACKING PLATE & 1 No. M10 SS BOLT TO SUPPORT BRACKET. LOOSE FIT, MIN. ID 170mm, MAX. ID 180mm

TYPICAL ELEVATION  
SCALE 1:10

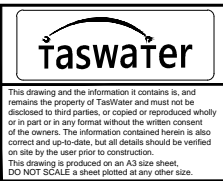
Revision Notes Designed by SEMF, A. Roddam, for TASWATER					
Rev.	A	Date	13/10/2015	Approved	S. Dadswell



Scale	Scale
Datum	AHD (Tas.)
Sheet Size	A3
References	

Drawn	T. Peebles	13/10/2015
Designed	S. Dadswell	13/10/2015
Verified	R. Witek	13/10/2015
Project No.	J15152	Discipline E
Vault Folder	STANDARDS	© 2015
HPRM File Ref.	15/173296	

DRAWING ISSUE  
**NOT FOR CONSTRUCTION**



TASWATER STANDARD DRAWING SEWAGE PUMP STATION LEVEL SENSOR STILLING TUBE FABRICATION & INSTALLATION DETAILS			
TASMANIAN WATER & SEWAGE CORPORATION PTY LTD ABN: 47 162220 653		Drawing Number <b>TWS-E-0008</b>	Sheet Number 02
		Revision A	

1 2 3 4 5 6