

ISOMETRIC VIEW

1 : 20

DN	CAGE DIMENSIONS		
	A	B	C
32/40 (Med - High Hazard)	1800	600	450
50 (Low Hazard)	1950	650	450
50 (Med - High Hazard)	2300	650	450
65 (Low Hazard)	1850	750	500
65 (Med - High Hazard)	2200	800	500
80 (Low Hazard)	2050	750	500
80 (Med - High Hazard)	2500	800	500
100 (Low Hazard)	2250	800	600
100 (Med - High Hazard)	2800	900	600
100 Fire Connection	1300	800	600
100 Mag. Flow Meter	2250	1250	600
100 with DN.25 By-Pass	1300	800	600

TABLE 1

GENERAL NOTES

1. All dimensions in millimeters (mm), unless noted otherwise.
2. Dimensions are based on TasWater Standard water meter drawings TWS-W-0003, required cage dimensions should be confirmed on site prior to fabrication.
3. Construct all framework from 50 x 50 x 4 mild steel equal angle.
4. All welds to be continuous fillet or butt welds and ground flush on framework.
5. Deburr and remove all sharp edges.
6. Provide drain holes prior to galvanising.
7. Cage Padlock - supplied by TasWater.
8. Weld cage mesh ('ARC Weldmesh' WB 422) on inside of panels.
9. DN.100 (Low Hazard) meter cage drawn - for other meter types see Table 1 for required dimensions.
10. Secure meter cage to concrete slab with 4 x M10 chemical anchors, 80 (min.) embedment.



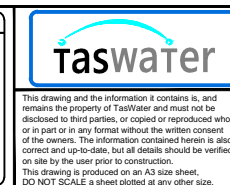
Revision Notes					
2. ADJUSTED DIMENSION B ON DN.100 MAG FLOW METER					
Rev.	2	Date	08/08/2018	Approved	G. HENDERSON



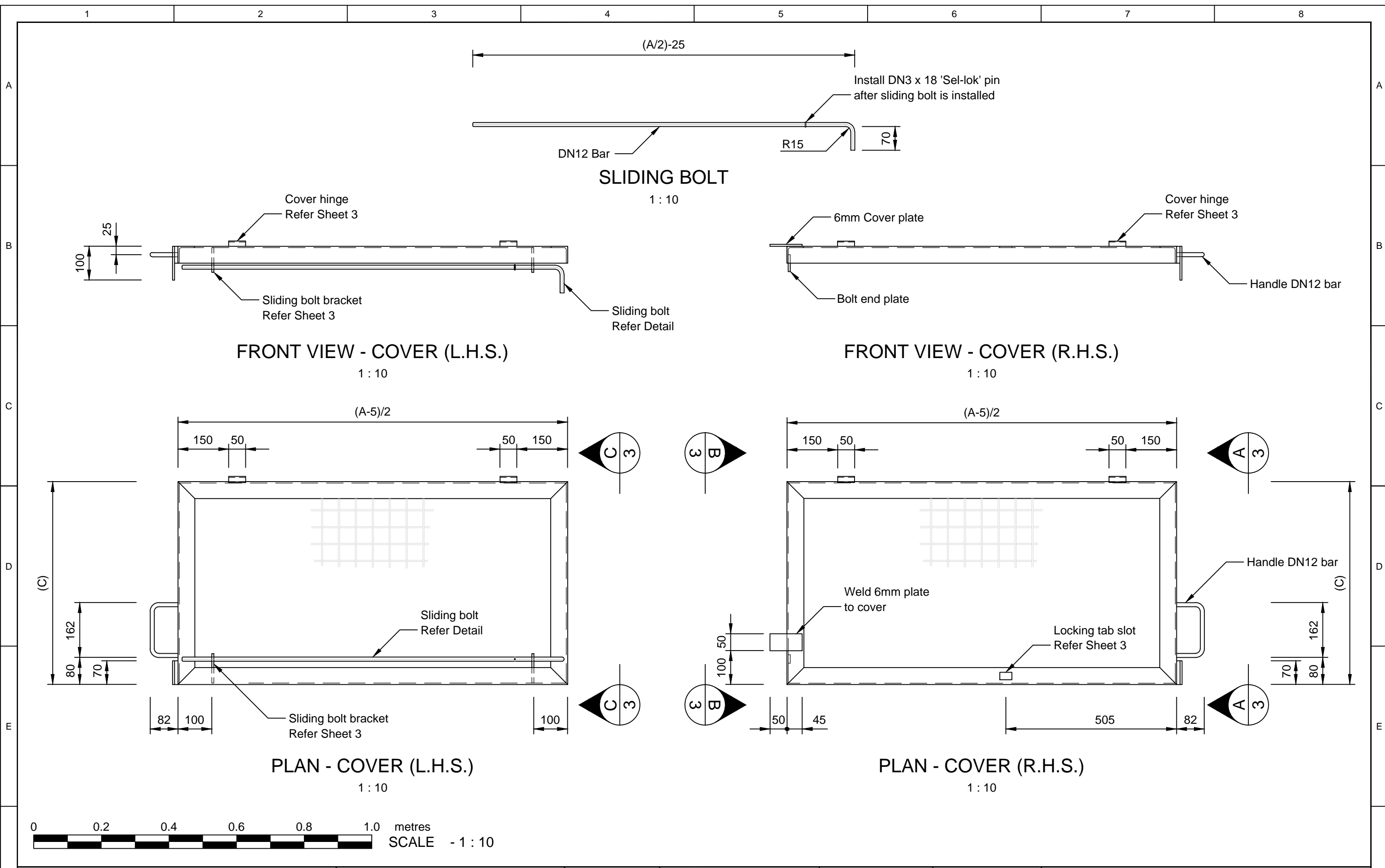
Scale	1 : 20
Datum	N/A
Sheet Size	A3
References	

Drawn	R. HAWLEY	06/02/2017
Designed	R. CAMERON	07/02/2017
Verified	R. JAMES	20/03/2017
Project No.	JR16982-035	Discipline W
Vault Folder	STANDARDS	© 2015
HPRM File Ref.	T15/82-006-0004	

DRAWING ISSUE
APPROVED



TASWATER STANDARD DRAWING PROPERTY SERVICE CONNECTIONS CAGE FOR WATER METER ASSEMBLY ISOMETRIC VIEW AND NOTES			
TASMANIAN WATER & SEWAGE CORPORATION PTY LTD ABN: 47 162220 653	Sheet Number TWS-W-0003	1 of 6	REVISION 2



Revision Notes				
Rev.	2	Date	08/08/2018	Approved
				G. HENDERSON

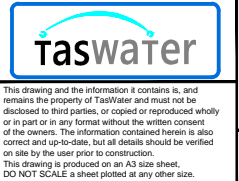


Scale	1 : 10
Datum	N/A
Sheet Size	A3
References	

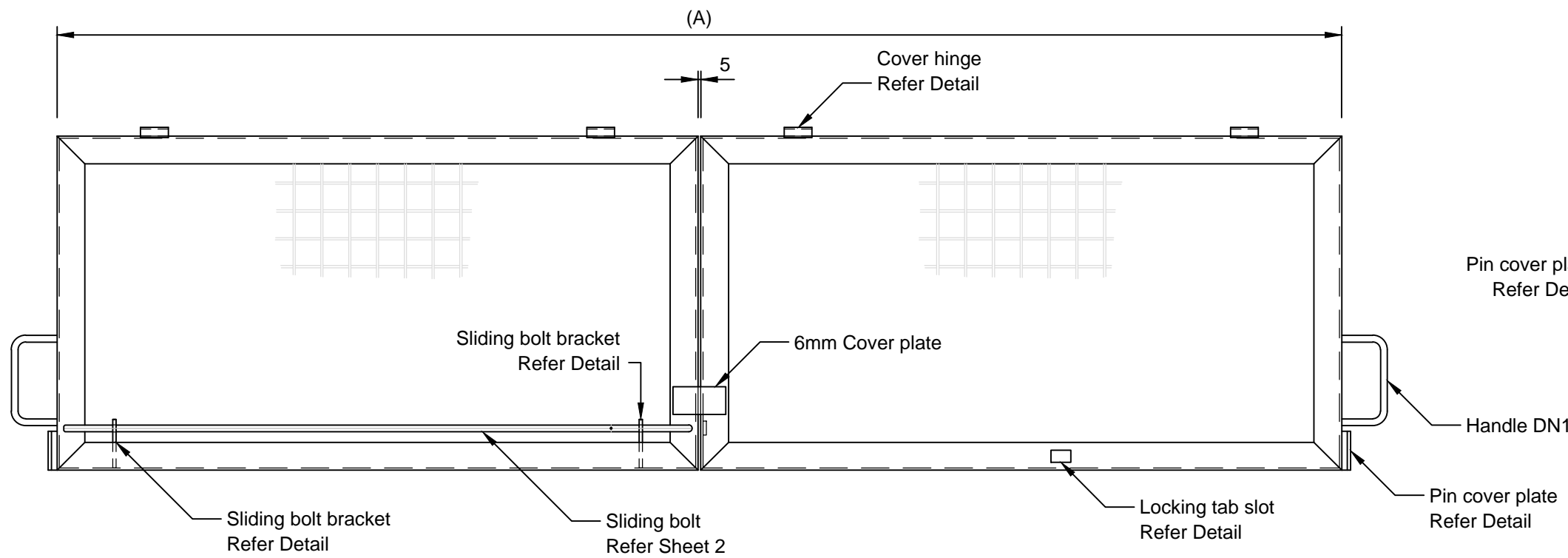
Drawn	R. HAWLEY	06/02/2017
Designed	R. CAMERON	07/02/2017
Verified	R. JAMES	20/03/2017
Project No.	JR16982-035	Discipline W
Vault Folder	STANDARDS	© 2015
HPRM File Ref.	T15/82-006-0004	

DRAWING ISSUE

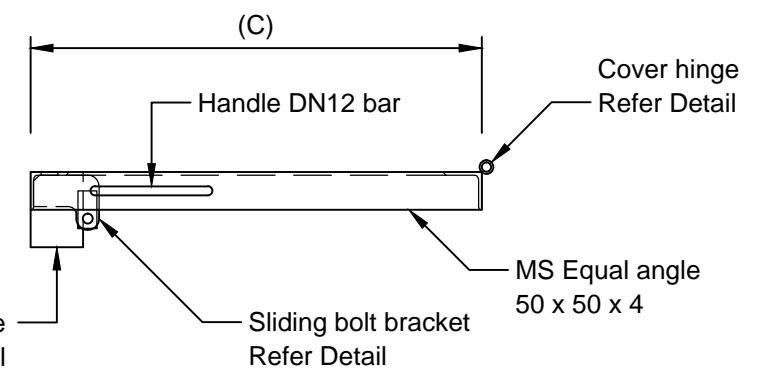
APPROVED



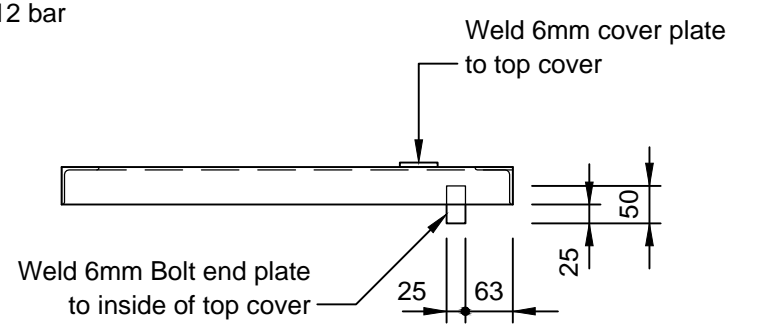
TASWATER STANDARD DRAWING			PROPERTY SERVICE CONNECTIONS		
CAGE FOR WATER METER ASSEMBLY			HINGED COVER DETAILS - SHEET 1		
TASMANIAN WATER & SEWAGE CORPORATION PTY LTD			ABN: 47 162220 653		
Sheet Number	TWS-W-0003		2 of 6	REVISION	
				2	



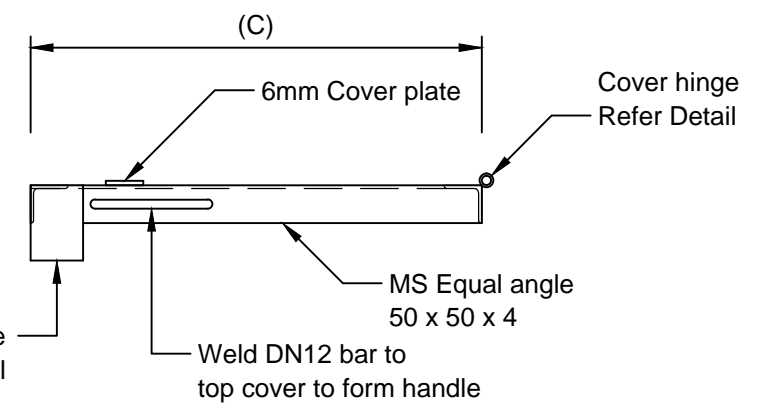
PLAN - COVERS (COMPLETE)
1 : 10



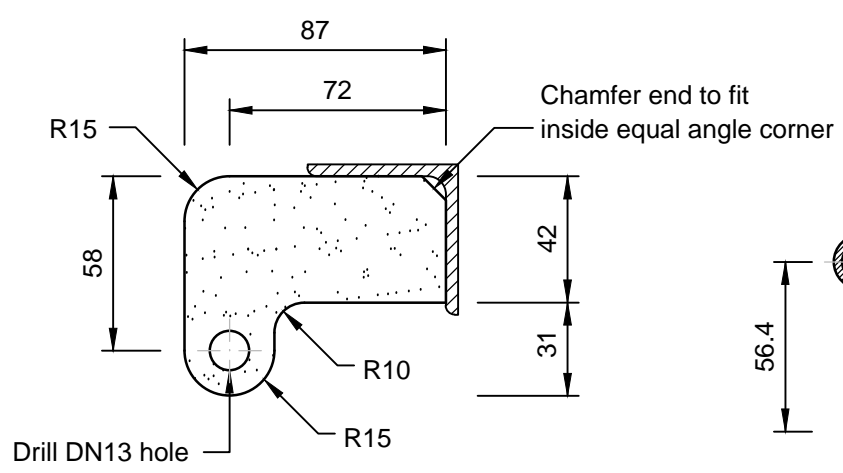
SECTION C - C
1 : 10



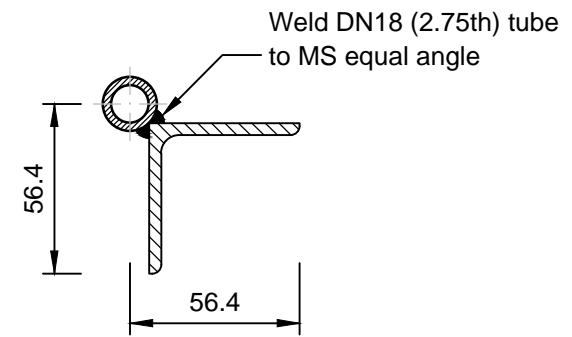
SECTION B - B
1 : 10



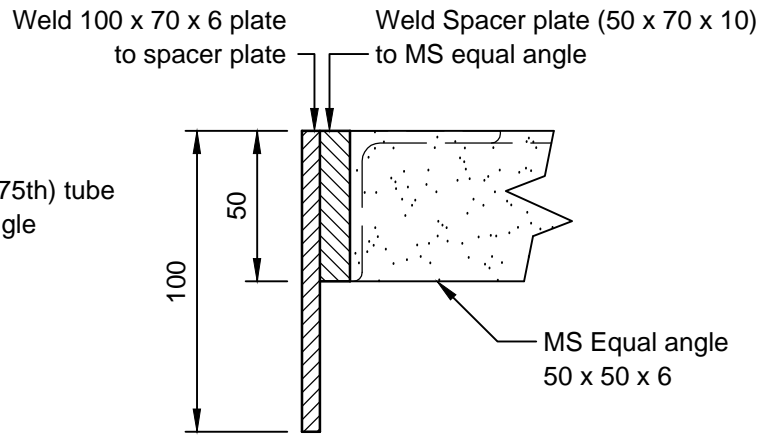
SECTION A - A
1 : 10



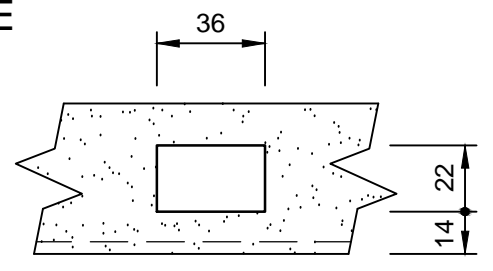
SLIDING BOLT BRACKET
(2 OFF)
1 : 2.5



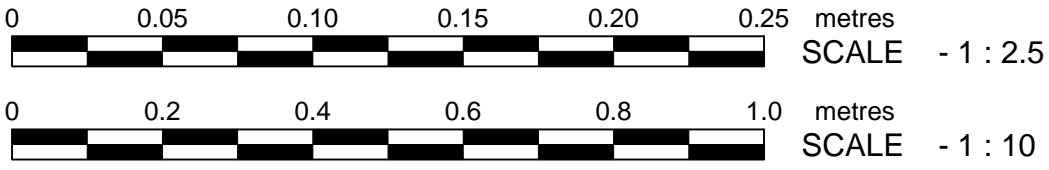
COVER HINGE
(4 OFF)
1 : 2.5



PIN COVER PLATE
(2 OFF)
1 : 2.5



LOCKING TAB SLOT
1 : 2.5



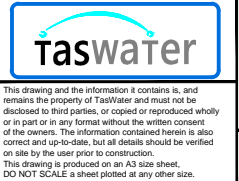
Revision Notes				
2. ADJUSTED DIMENSION B ON DN.100 MAG FLOW METER				
Rev.	2	Date	08/08/2018	Approved
		G. HENDERSON		



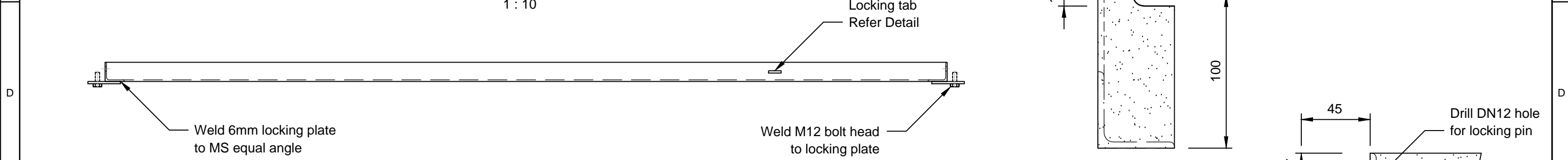
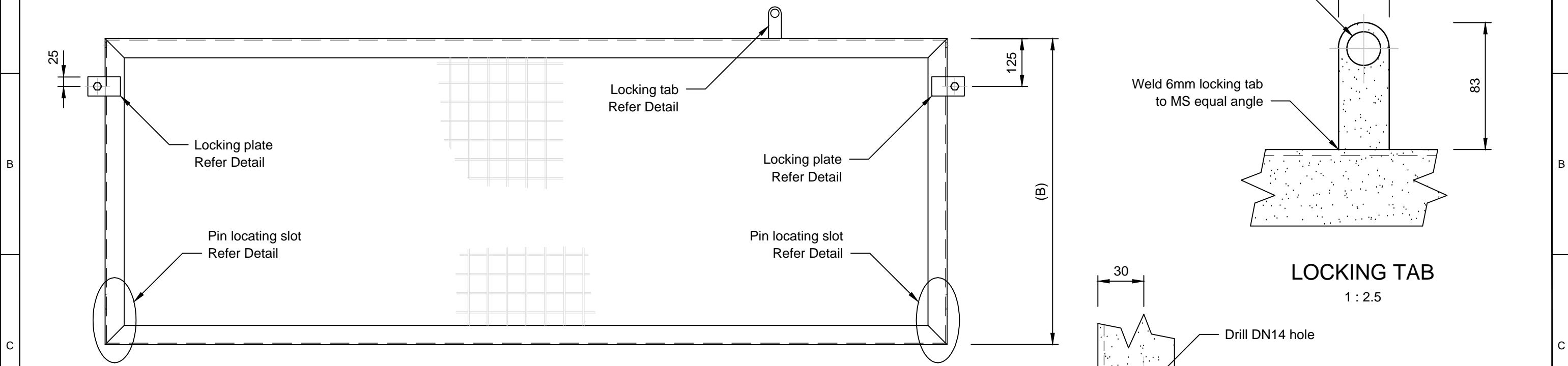
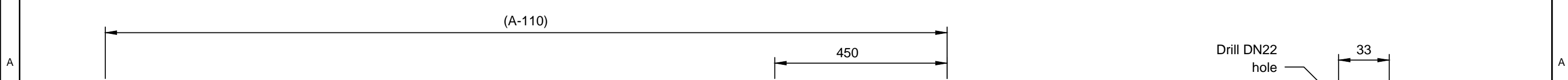
Scale	As Shown
Datum	N/A
Sheet Size	A3
References	

Drawn	R. HAWLEY	06/02/2017
Designed	R. CAMERON	07/02/2017
Verified	R. JAMES	20/03/2017
Project No.	JR16982-035	Discipline W
Vault Folder	STANDARDS	© 2015
HPRM File Ref.	T15/82-006-0004	

DRAWING ISSUE
APPROVED



TASWATER STANDARD DRAWING PROPERTY SERVICE CONNECTIONS CAGE FOR WATER METER ASSEMBLY HINGED COVER DETAILS - SHEET 2		
TASMANIAN WATER & SEWAGE CORPORATION PTY LTD ABN: 47 162220 653	Sheet Number TWS-W-0003	REVISION 3 of 6 2



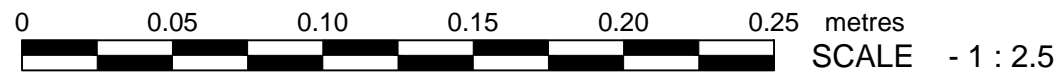
FRONT VIEW
1 : 10

PLAN
1 : 10

LOCKING TAB
1 : 2.5

PIN LOCATING SLOT
(2 OFF)
1 : 2.5

LOCKING PLATE DETAIL
(2 OFF)
1 : 2.5



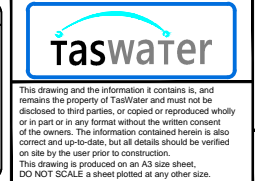
Revision Notes				
2. ADJUSTED DIMENSION B ON DN.100 MAG FLOW METER				
Rev.	2	Date	08/08/2018	Approved
		G. HENDERSON		



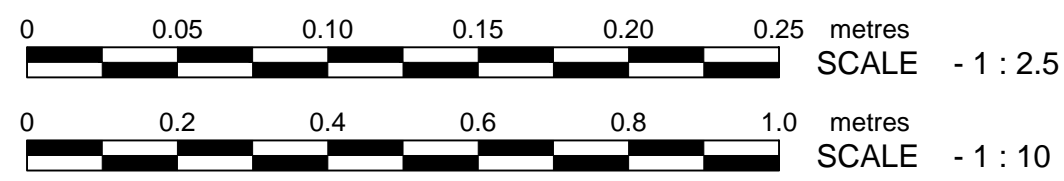
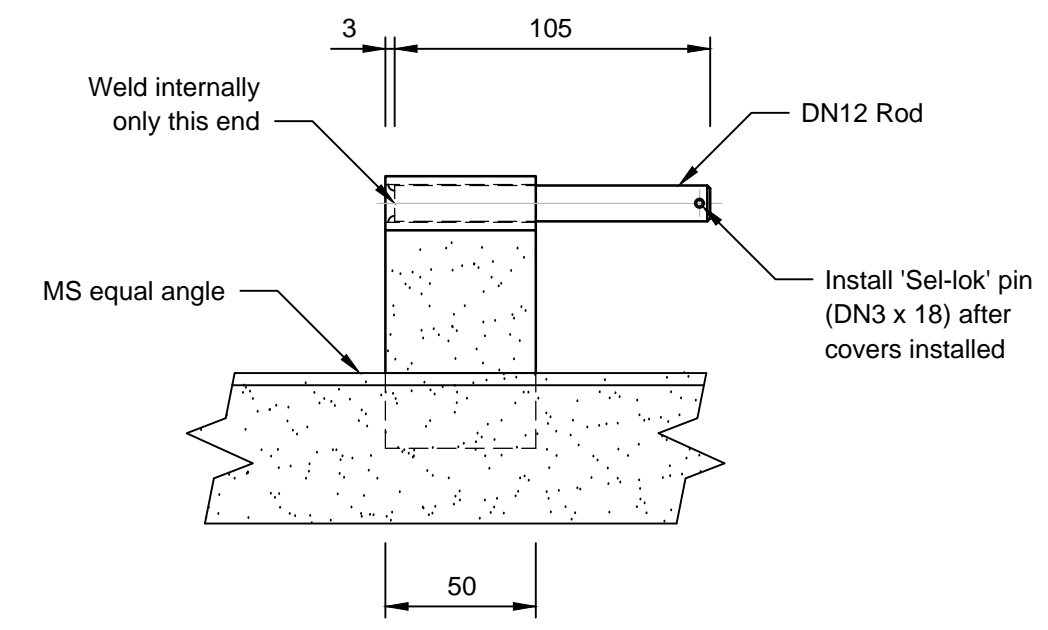
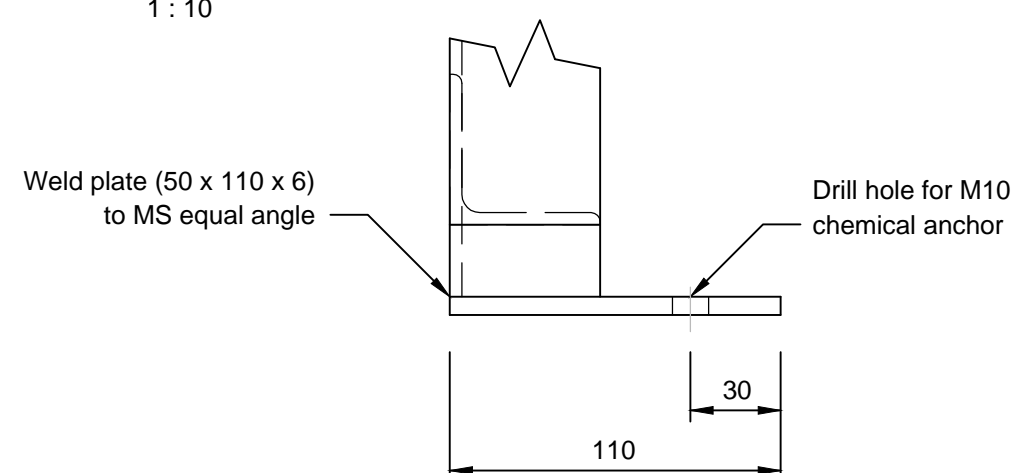
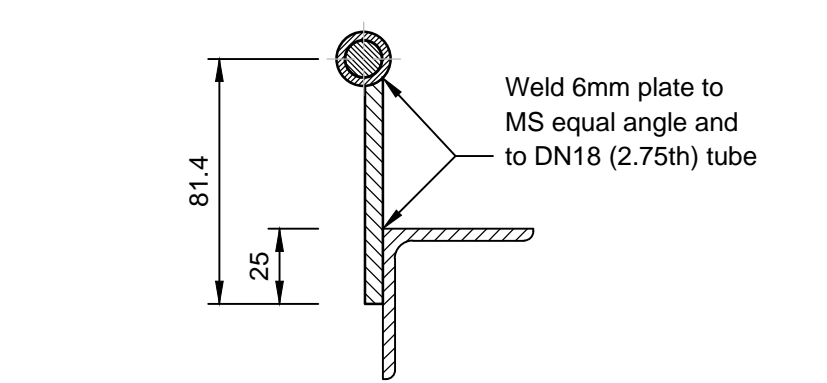
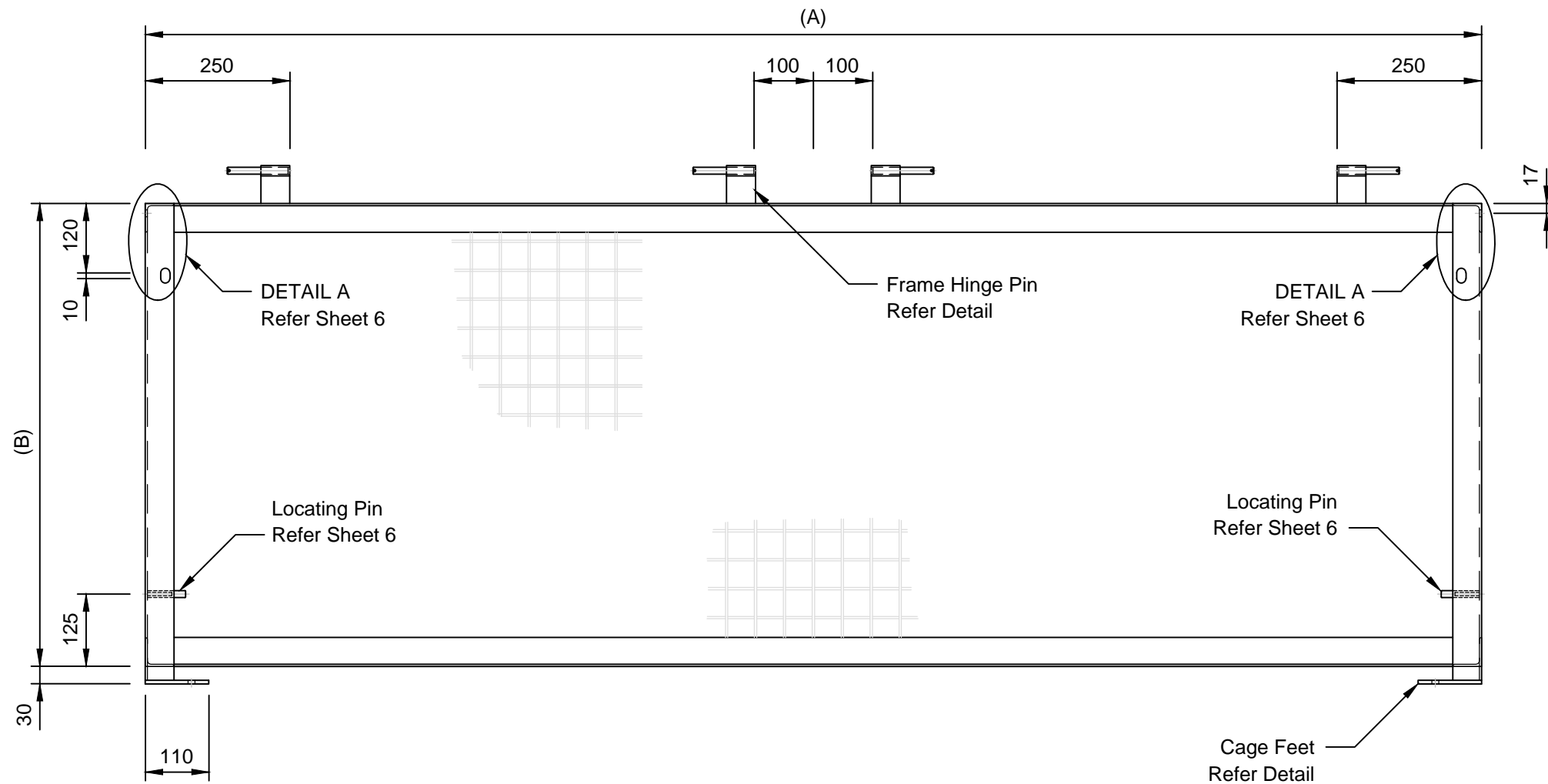
Scale	As Shown
Datum	N/A
Sheet Size	A3
References	

Drawn	R. HAWLEY	06/02/2017
Designed	R. CAMERON	07/02/2017
Verified	R. JAMES	20/03/2017
Project No.	JR16982-035	Discipline W
Vault Folder	STANDARDS	© 2015
HPRM File Ref.	T15/82-006-0004	

DRAWING ISSUE
APPROVED



TASWATER STANDARD DRAWING PROPERTY SERVICE CONNECTIONS CAGE FOR WATER METER ASSEMBLY FRONT PANEL DETAILS			
TASMANIAN WATER & SEWAGE CORPORATION PTY LTD ABN: 47 162220 653	Sheet Number TWS-W-0003	Sheet Count 4 of 6	Revision 2



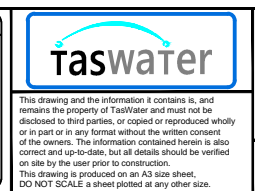
Revision Notes					
2. ADJUSTED DIMENSION B ON DN.100 MAG FLOW METER					
Rev.	Date	Approved	G. HENDERSON		
2	08/08/2018				



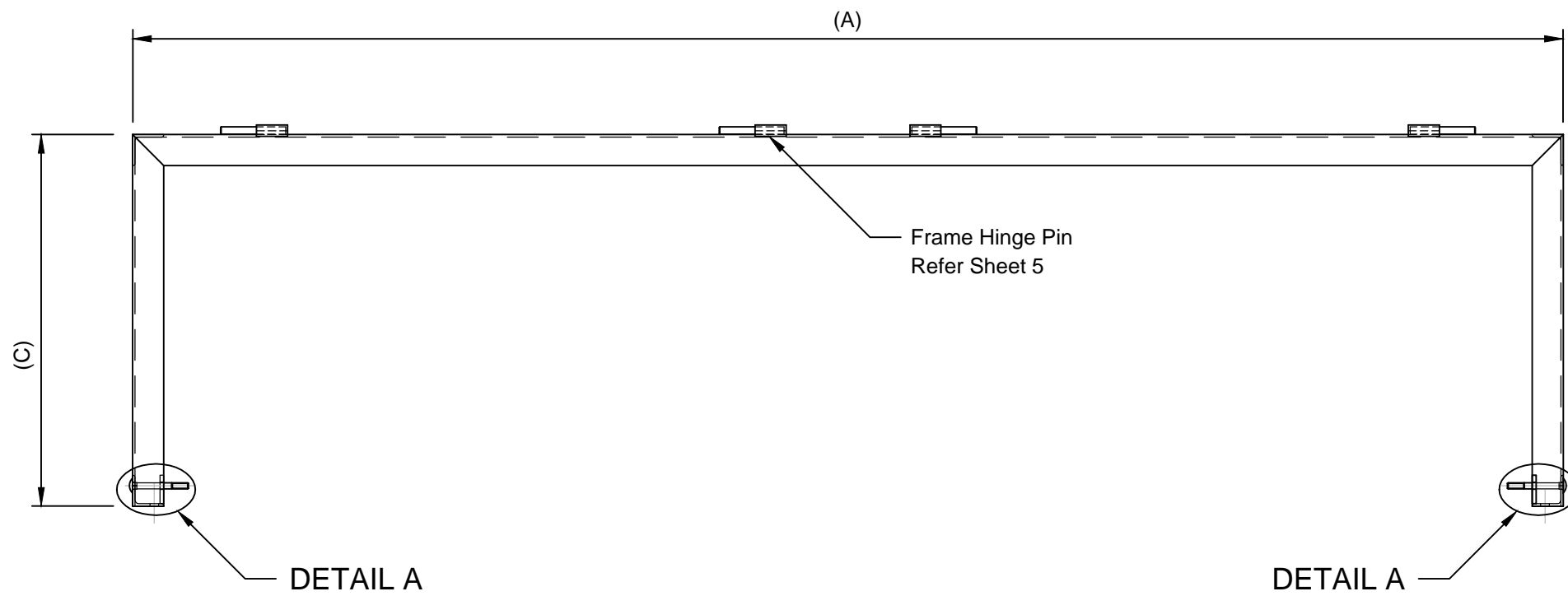
Scale	As Shown
Datum	N/A
Sheet Size	A3
References	

Drawn	R. HAWLEY	06/02/2017
Designed	R. CAMERON	07/02/2017
Verified	R. JAMES	20/03/2017
Project No.	JR16982-035	Discipline W
Vault Folder	STANDARDS	© 2015
HPRM File Ref.	T15/82-006-0004	

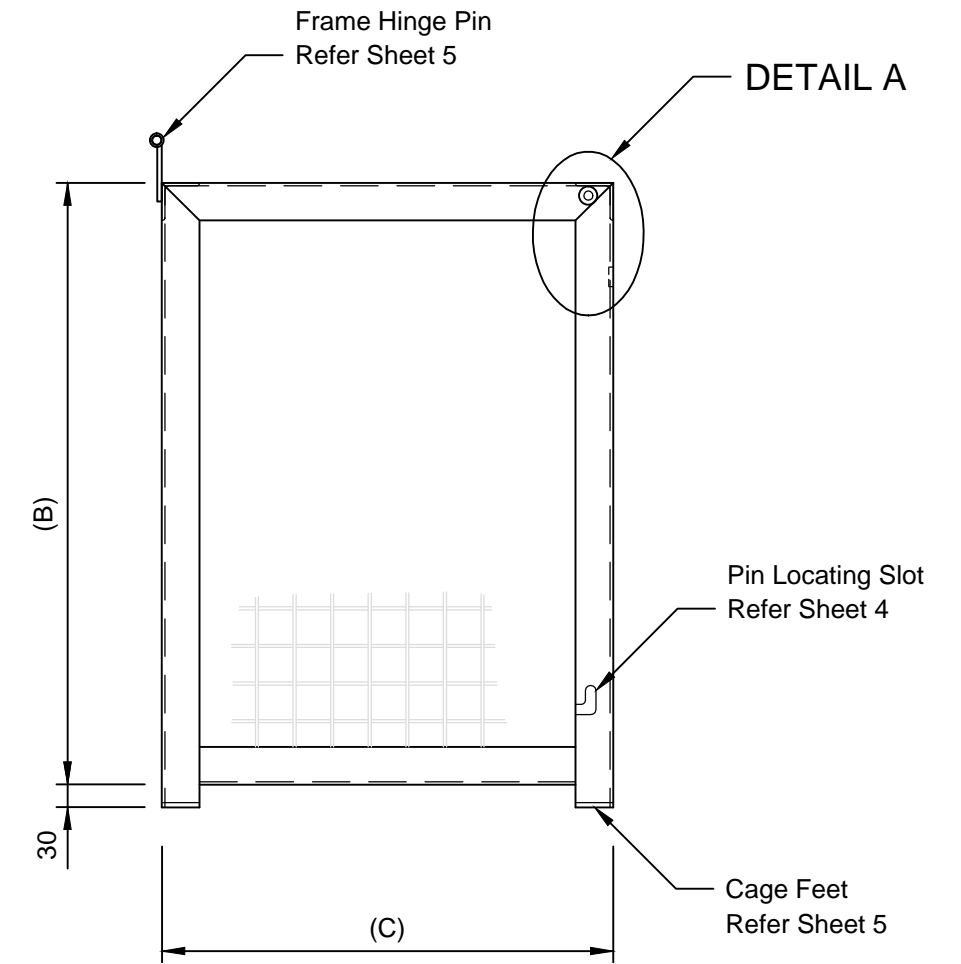
DRAWING ISSUE
APPROVED



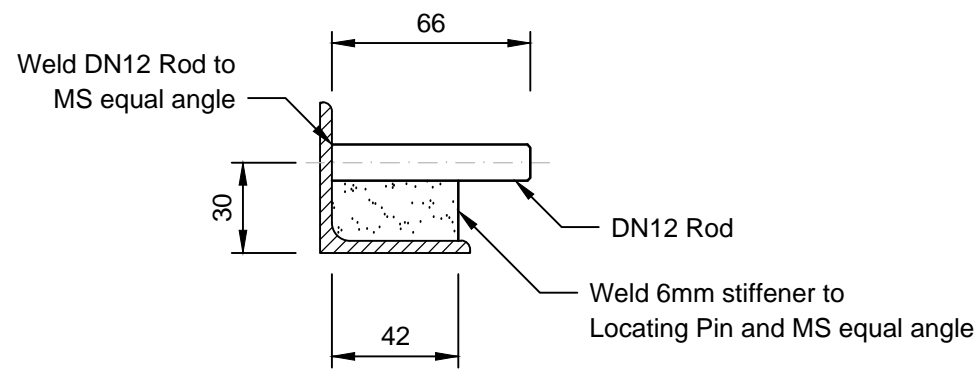
TASWATER STANDARD DRAWING PROPERTY SERVICE CONNECTIONS CAGE FOR WATER METER ASSEMBLY FRAME - FRONT VIEW AND DETAILS			
TASMANIAN WATER & SEWAGE CORPORATION PTY LTD ABN: 47 162220 653	Project No. TWS-W-0003	Sheet Number 5 of 6	Revision 2



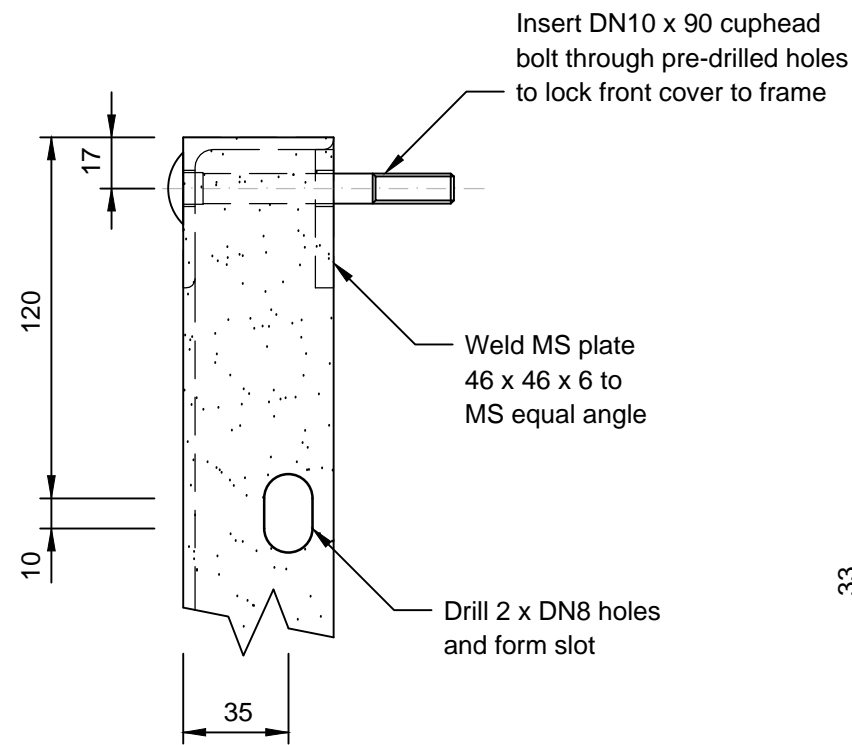
FRAME - PLAN VIEW
1 : 10



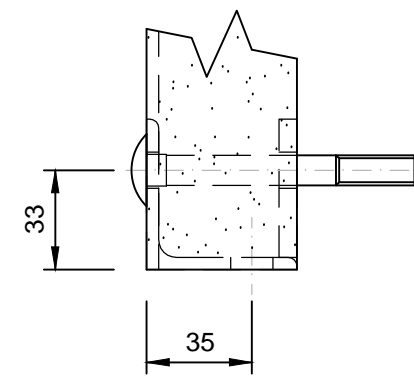
FRAME - SIDE VIEW
1 : 10



LOCATING PIN DETAIL
1 : 2.5

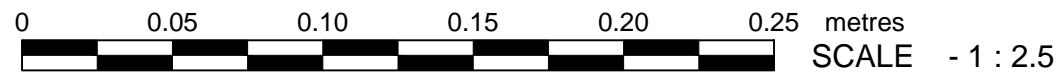


FRONT VIEW



PLAN VIEW

DETAIL A
(2 OFF)
1 : 2.5



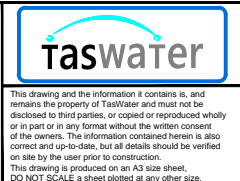
Revision Notes					
2. ADJUSTED DIMENSION B ON DN.100 MAG FLOW METER					
Rev.	2	Date	08/08/2018	Approved	G. HENDERSON



Scale	As Shown
Datum	N/A
Sheet Size	A3
References	

Drawn	R. HAWLEY	06/02/2017
Designed	R. CAMERON	07/02/2017
Verified	R. JAMES	20/03/2017
Project No.	JR16982-035	Discipline W
Vault Folder	STANDARDS	© 2015
HPRM File Ref.	T15/82-006-0004	

DRAWING ISSUE
APPROVED



TASWATER STANDARD DRAWING PROPERTY SERVICE CONNECTIONS CAGE FOR WATER METER ASSEMBLY FRAME - PLAN, SIDE VIEW AND DETAILS			
TASMANIAN WATER & SEWAGE CORPORATION PTY LTD ABN: 47 162220 653	Sheet Number TWS-W-0003	Sheet Number 6 of 6	REVISION 2