

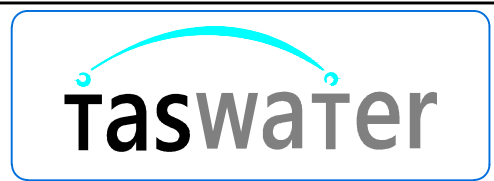
THE MINIMUM DEPTHS FOR A TW STANDARD SEWAGE PUMP STATION ARE TO BE DEDUCED AS FOLLOWS:

THESE NOTES ARE TO BE READ IN CONJUNCTION WITH THE WET WELL LEVEL SETTINGS - SET UP DRAWING, ON SHEET 02

- DEPTH 1 OVERFLOW TO STORM WATER / ENVIRONMENT**
THIS IS GENERALLY SET BASED ON THE TOPOLOGY OF THE RECEIVING ENVIRONMENT
- DEPTH 2 INVERT EMERGENCY STORAGE FILL/(DRAIN) LINE**
THIS IS DETERMINED BY :
a) WSAA REQUIREMENT OF THE ADDITION OF :
 a. MIN 100MM BELOW THE INVERT **OVERFLOW TO STORM WATER / ENVIRONMENT +**
 b. PIPE DIAMETER OF EMERGENCY STORAGE INLET PIPE
- DEPTH 3 INVERT LEVEL OF WET WELL INLET PIPE**
THIS IS DETERMINED BY EITHER :
a) INVERT LEVEL OF THE NETWORK CONNECTION **OR**
b) WSAA REQUIREMENT OF THE ADDITION OF :
 a. MIN 150MM BELOW THE INVERT **OVERFLOW TO EMERGENCY STORAGE +**
 b. PIPE DIAMETER OF WET WELL INLET PIPE
WHICHEVER IS THE GREATER.
- DEPTH 4 HIGH FLOAT LEVEL (FLOAT CABLE LENGTH FROM TOP OF WELL CONCRETE COVER)**
THIS IS DETERMINED BY EITHER :
a) MIN 100MM BELOW **INVERT LEVEL OF WET WELL INLET PIPE OR**
b) MIN DEPTH TO ACHIEVE THE REQUIRED EMERGENCY STORAGE TIME FOR THE SPECIFIC SITE (4-8 HOURS)
WHICHEVER IS THE GREATER
- DEPTH 5 INFLOW EMERGENCY ALARM *(NOT USED BY TASWATER)**
THIS IS DETERMINED BY :
a) MIN 150MM ABOVE **HIGH FLOAT LEVEL**
- DEPTH 6 START DUTY PUMP**
THIS IS DETERMINED BY EITHER :
a) MIN 450MM BELOW **HIGH LEVEL** IF DUTY/STANDBY PUMP CONFIGURATION, OR
b) MIN 600MM BELOW **HIGH FLOAT LEVEL** IF DUTY/ASSIST PUMP CONFIGURATION
- DEPTH 7 START ASSIST PUMP**
THIS IS:
a) MIN 150MM ABOVE **START DUTY PUMP**
- DEPTH 8 STOP PUMPS LEVEL**
THIS IS DETERMINED BY EITHER :
a) MIN 150MM BELOW **START DUTY PUMP LEVEL, OR**
b) MIN DEPTH TO ACHIEVE MAXIMUM 8 STARTS PER HOUR WITH AN INFLOW OF HALF THE PUMP OPERATIONAL DESIGN FLOW SET POINT
WHICHEVER IS THE GREATER
- EMERGENCY STORAGE WASH - IF STORAGE HAS PREVIOUSLY FILLED
- DEPTH 9 LOW FLOAT LEVEL (FLOAT CABLE LENGTH FROM TOP OF WELL CONCRETE COVER)**
THIS IS DETERMINED BY:
a) 150MM BELOW **STOP PUMPS**
- DEPTH 10 INTERNAL FLOOR OF WET WELL LEVEL**
THIS IS DETERMINED BY :
a) MIN 100MM BELOW **PUMPS OFF LEVEL + PUMP MANUFACTURERS RECOMMENDED MINIMUM COVER LEVEL OR**
b) MIN 300MM BELOW **PUMPS OFF LEVEL + PUMP MANUFACTURERS SNORE LEVEL**
WHICHEVER IS THE GREATER
- DEPTH 11 BOTTOM OF LEVEL SENSOR (ANALOGUE LEVEL, 0 DATUM POINT) - FLOOR OFFSET**
THIS IS DETERMINED BY :
a) MIN 100MM ABOVE **INTERNAL FLOOR OF WET WELL LEVEL &**
b) MAX 50MM BELOW INSTALLED PUMP SNORE LEVEL

*NOTE: TASWATER USES A MAX TIME BETWEEN STARTS TO IDENTIFY NO INFLOW TO STATION

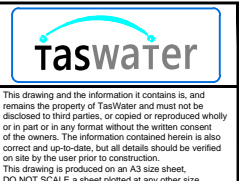
Revision Notes					
A - NEW VERSION OF TASWATER STANDARD DWG TWS-E-0007 [A]					
Rev.	1	Date	08/12/2017	Approved	G. Henderson



Scale	NTS
Datum	AHD (Tas.)
Sheet Size	A3
SW-SD-S-12	
References	

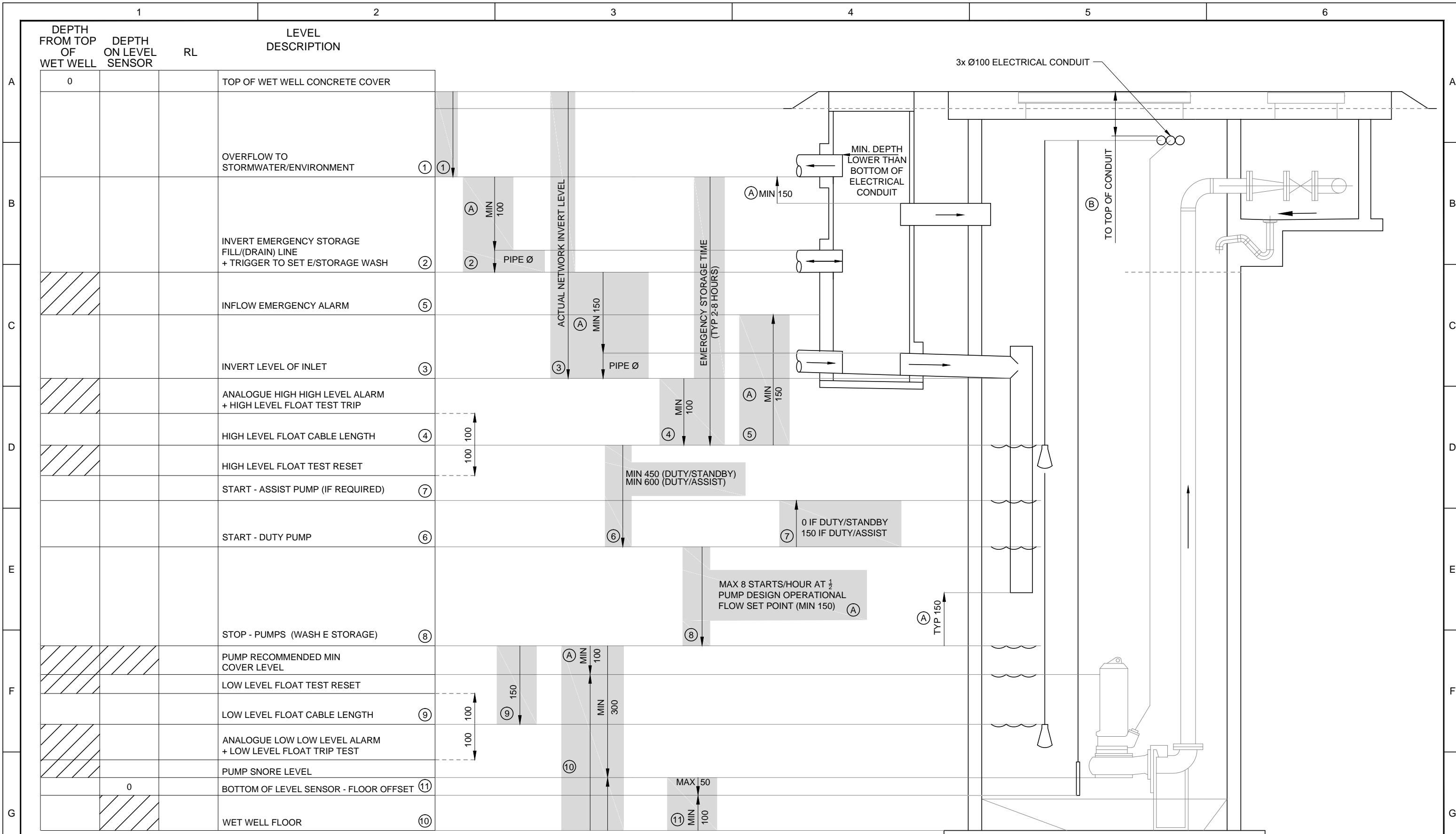
Drawn	G. Chugg	08/12/2017
Designed	G. Henderson	08/12/2017
Verified	S. Becker	08/12/2017
Project No.	J15152	Discipline M
Vault Folder	STANDARDS	© 2017
HPRM File Ref.	15/173274	

DRAWING ISSUE
APPROVED



**TASWATER STANDARD DRAWING
SEWAGE PUMP STATION
WET WELL LEVEL SETTINGS
GENERAL NOTES**

TASMANIAN WATER & SEWAGE CORPORATION PTY LTD ABN: 47 162220 653		Drawing Number TWS-M-0002	Sheet Number 01	REVISION 1
--	--	-------------------------------------	--------------------	---------------

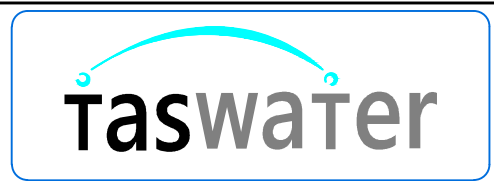


BASE OF WET WELL - RL m AHD
 TOP OF WET WELL - RL m AHD
 INTERNAL WET WELL DIA mm

NOTES:
 (A) WSAA REQUIREMENTS
 (B) GENERALLY 500mm MAY BE REDUCED TO 300mm IF CONDUIT UNDER MINIMUM 75mm THICK CONCRETE. REFER AS 3000 FOR MINIMUM DEPTHS

THIS DRAWING IS TO BE READ IN CONJUNCTION WITH THE WET WELL LEVEL SETTINGS - GENERAL NOTES, ON SHEET 01 AND TDESTD25

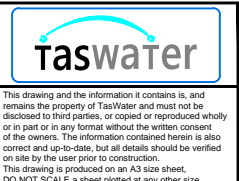
Revision Notes				
A - NEW VERSION OF TASWATER STANDARD DWG TWS-E-0007 [A]				
Rev.	1	Date	08/12/2017	Approved
				G. Henderson



Scale	NTS
Datum	AHD (Tas.)
Sheet Size	A3
SW-SD-S-12	
References	

Drawn	G. Chugg	08/12/2017
Designed	G. Henderson	08/12/2017
Verified	S. Becker	08/12/2017
Project No.	J15152	Discipline M
Vault Folder	STANDARDS	© 2017
HPRM File Ref.	15/173274	

DRAWING ISSUE
APPROVED



TASWATER STANDARD DRAWING			
SEWAGE PUMP STATION			
WET WELL LEVEL SETTINGS			
SET UP DRAWINGS			
TASMANIAN WATER & SEWAGE CORPORATION PTY LTD ABN: 47 162220 653		Sheet Number TWS-M-0002	REVISION 02 1