

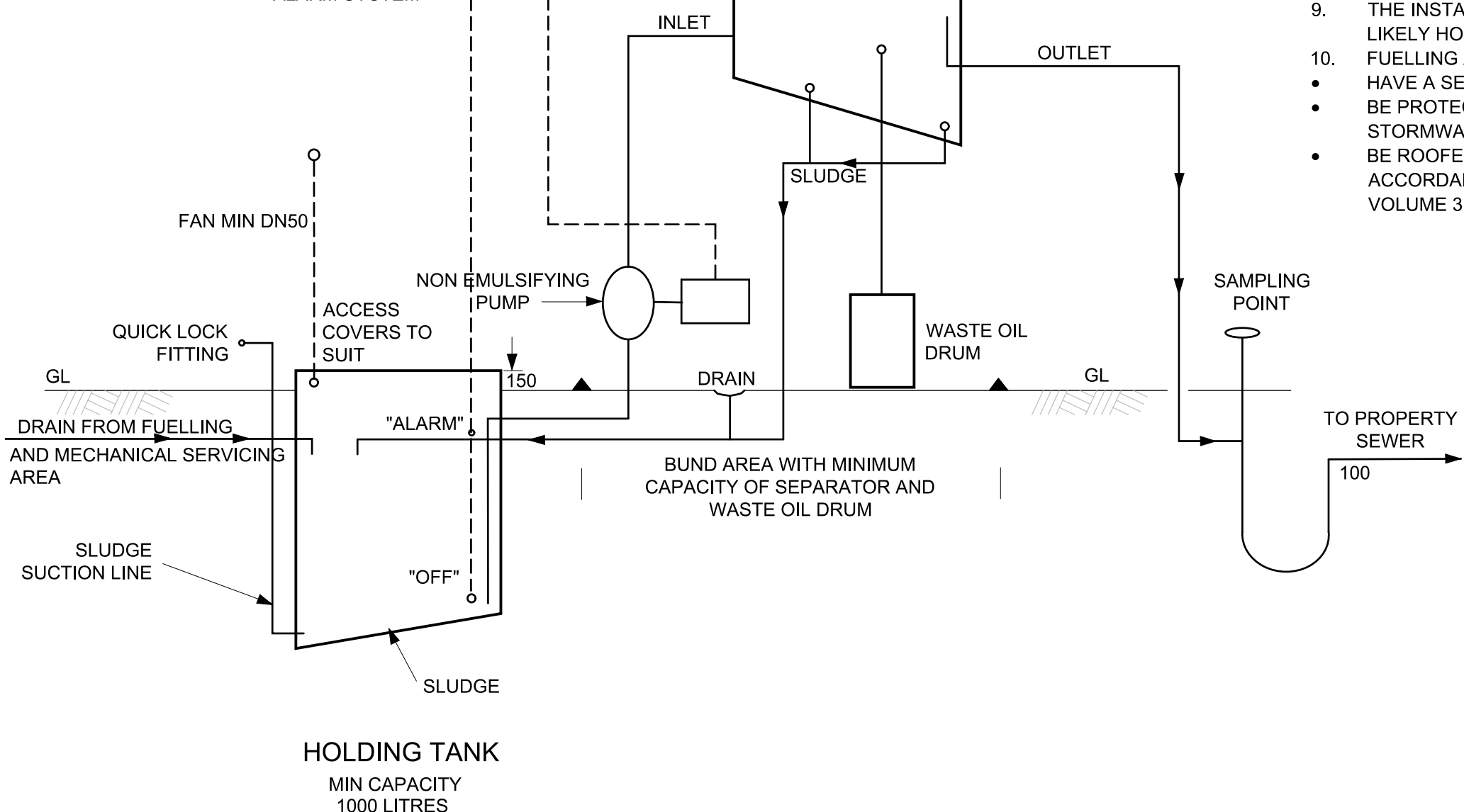
AUDIBLE & VISUAL
ALARM SIGNAL TO
OPERATOR CONSOLE

MANUAL PUMP START AND
ALARM SYSTEM

APPROVED SEPARATOR

NOTES

1. SEPARATORS TO BE INSTALLED IN A BUNDED AREA.
2. DRAIN FROM BUNDED AREA TO DISCHARGE TO HOLDING TANK.
3. MINIMUM SIZE OF SAMPLING POINT TO BE DN100.
4. MANUAL START AND AUTOMATIC SHUT OFF FOR PUMP.
5. FOR SILT TRAPS REFER TO TYPICAL DRAWING TWS-C-0001-4.
6. VENT TO HOLDING TANK CAN BE TAKEN OFF INLET PIPE WORK TO PUMP PIT AS AN ALTERNATIVE.
7. MANUAL PUMP START TO BE LOCATED ADJACENT TO HOLDING TANK.
8. ALL MEASUREMENTS SHOWN ARE IN MILLIMETRES.
9. THE INSTALLATION MUST BE SIZED ACCORDING TO THE MAXIMUM LIKELY HOURLY FLOW RATE AS ACCEPTED BY TASWATER.
10. FUELLING AND MECHANICAL SERVICING AREA IS TO:
 - HAVE A SEALED PAVEMENT.
 - BE PROTECTED FROM STORMWATER INFILTRATION VIA A SUITABLE STORMWATER DIVERSION DRAIN.
 - BE ROOFED WITH A 10° ROOF OVERHANG FROM THE CUT OFF DRAIN IN ACCORDANCE WITH THE NATIONAL CONSTRUCTION CODE 2019 VOLUME 3.



HOLDING TANK
MIN CAPACITY
1000 LITRES

**THESE STANDARD DRAWINGS ARE PROVIDED AS A GUIDE.
THE DESIGNER SHOULD ENSURE THAT THE PRETREATMENT SOLUTION IS
DESIGNED TO ENSURE COMPLIANCE WITH TASWATER DISCHARGE QUALITY
REQUIREMENTS AND ALL OTHER REGULATORY REQUIREMENTS**

TO BE READ IN CONJUNCTION WITH TASWATER PRETREATMENT GUIDELINES

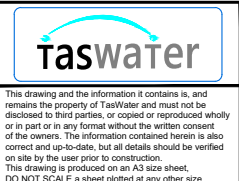
Revision Notes				
Rev.	1	Date	13/11/19	Approved
1 - GENERAL UPDATE. SEE HPE RECORD NO. 19/136338				
B - INITIAL ISSUE				
Greg Cooper				



Scale	NTS
Datum	-
Sheet Size	A3
References	

Drawn	PH	24/9/2015
Designed	GC	24/9/2015
Verified	AD	6/10/2015
Project No.	-	Discipline
Vault Folder	© 2015	
HPRM File Ref.	T15/161-002-0001	

**NOT FOR
CONSTRUCTION**



TASWATER STANDARD DRAWING TRADE WASTE TYPICAL DRAWING FUELLING AREAS - SERVICE STATIONS			
TASMANIAN WATER & SEWAGE CORPORATION PTY LTD ABN: 47 162220 653			
Sheet Number	TWS-C-0001	Revision	1