

Geeveston STP Outfall

Alternate options investigation update

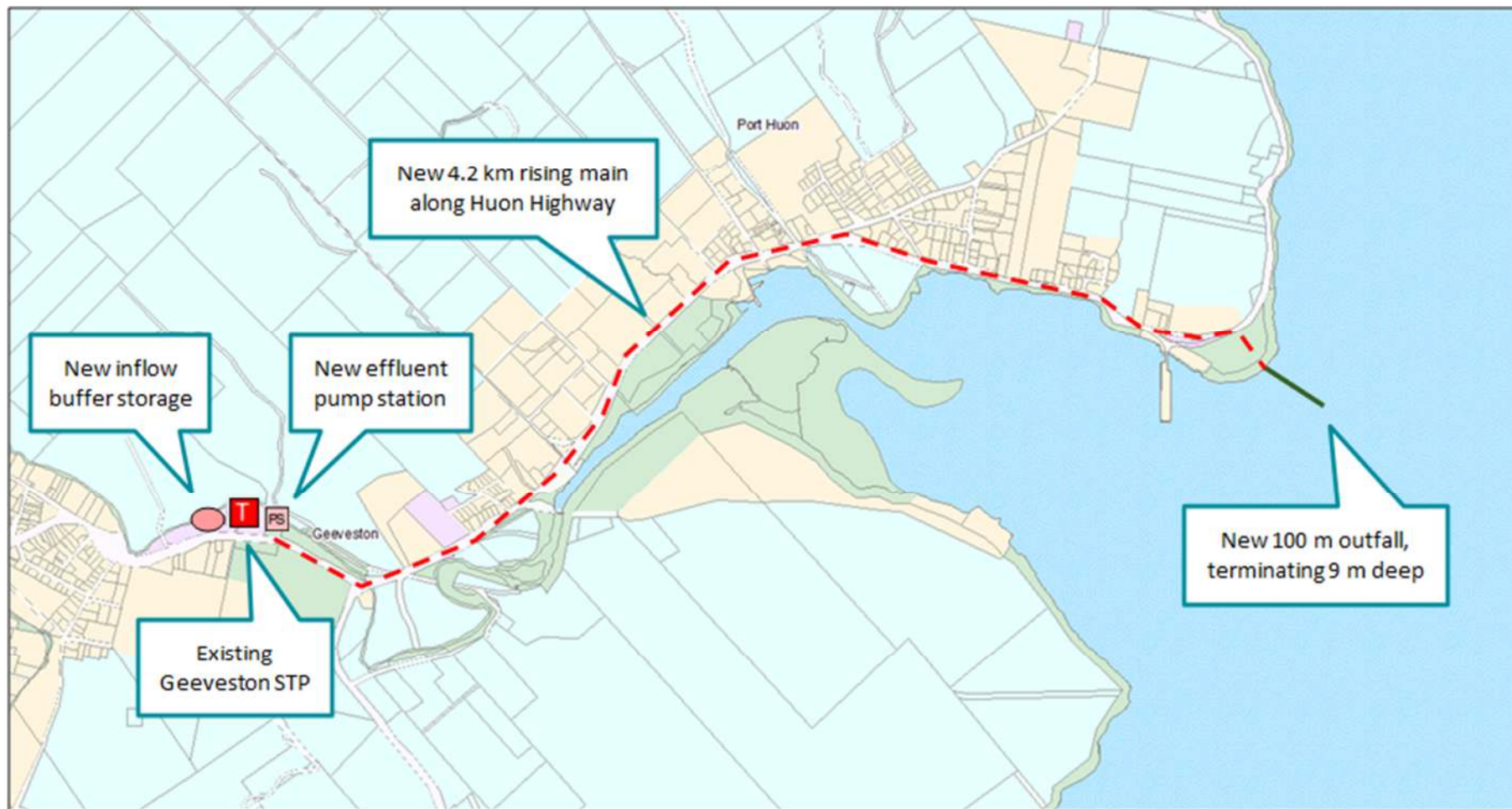
July 2023



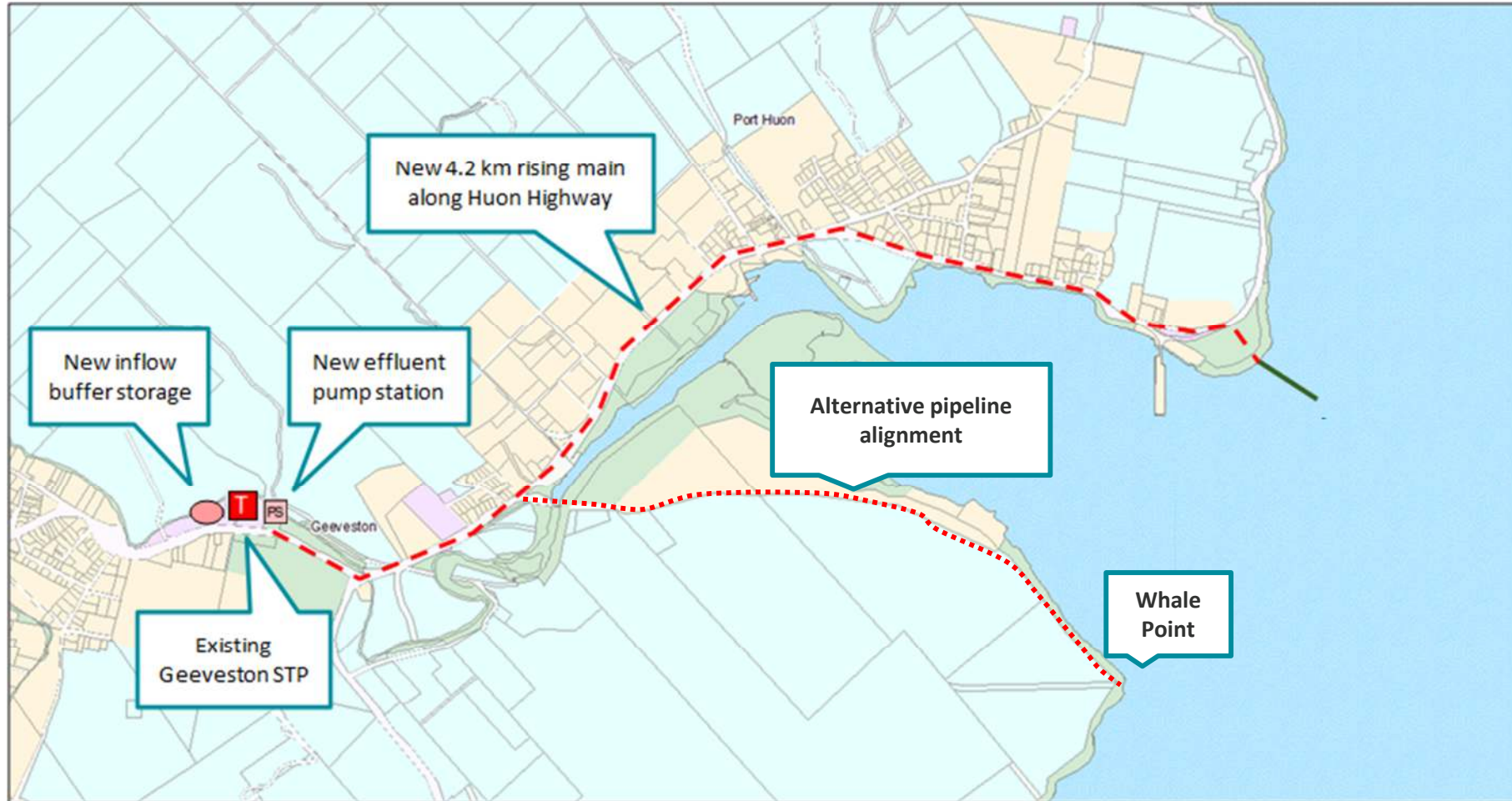
Background



Original Project Scope



Alternative Pipeline and Outfall Location



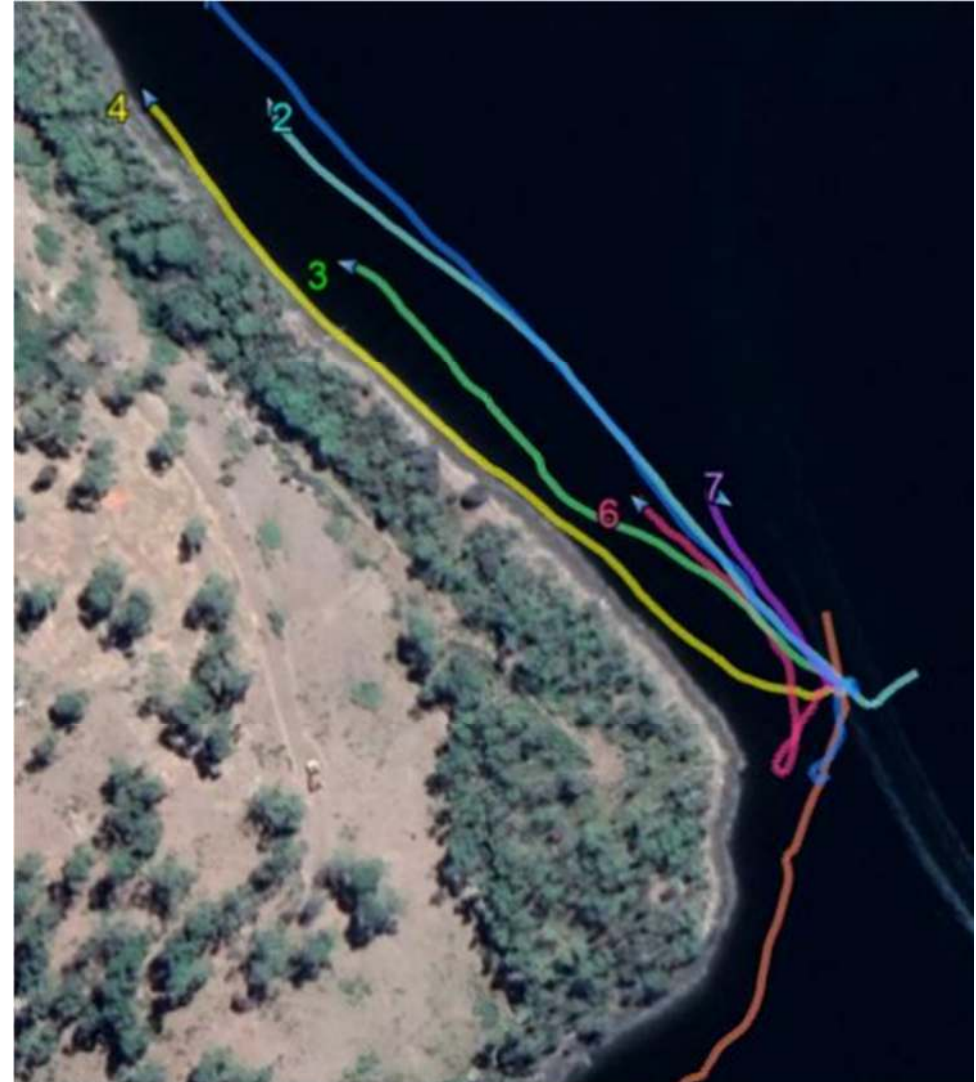
Alternative Outfall Locations



Figure 1 Alternative outfall locations in proximity to marine farming zones (from Figure 1 Marine Solutions 2023)

Whale Point – Option A

- Preliminary investigations have been undertaken into Whale Point.
- A comparable Horizontal Directional Drilling (HDD) outfall at Whale Point was chosen.
- The key finding is that currents at Whale Point tend to flow back into Hospital Bay in either tide.
- For this reason, the outfall location at Whale Point is not considered equal to the environment outcome at the current proposed Shipwrights Point.



Whale Point – Option B & C

How far off-shore would the outfall need to be to ensure currents flow south under all tides?

Option B

- Sub-tidal pipeline of 483m
- Water depth – 11.5m

Option C

- Sub-tidal pipeline of 725m
- Water depth – 12m
- Underwater habitat surveys were similar in species and composition and sediment type across all locations.
- An alternative submersible pipeline is proposed which is more cost effective than horizontal directional drilling under the seabed.



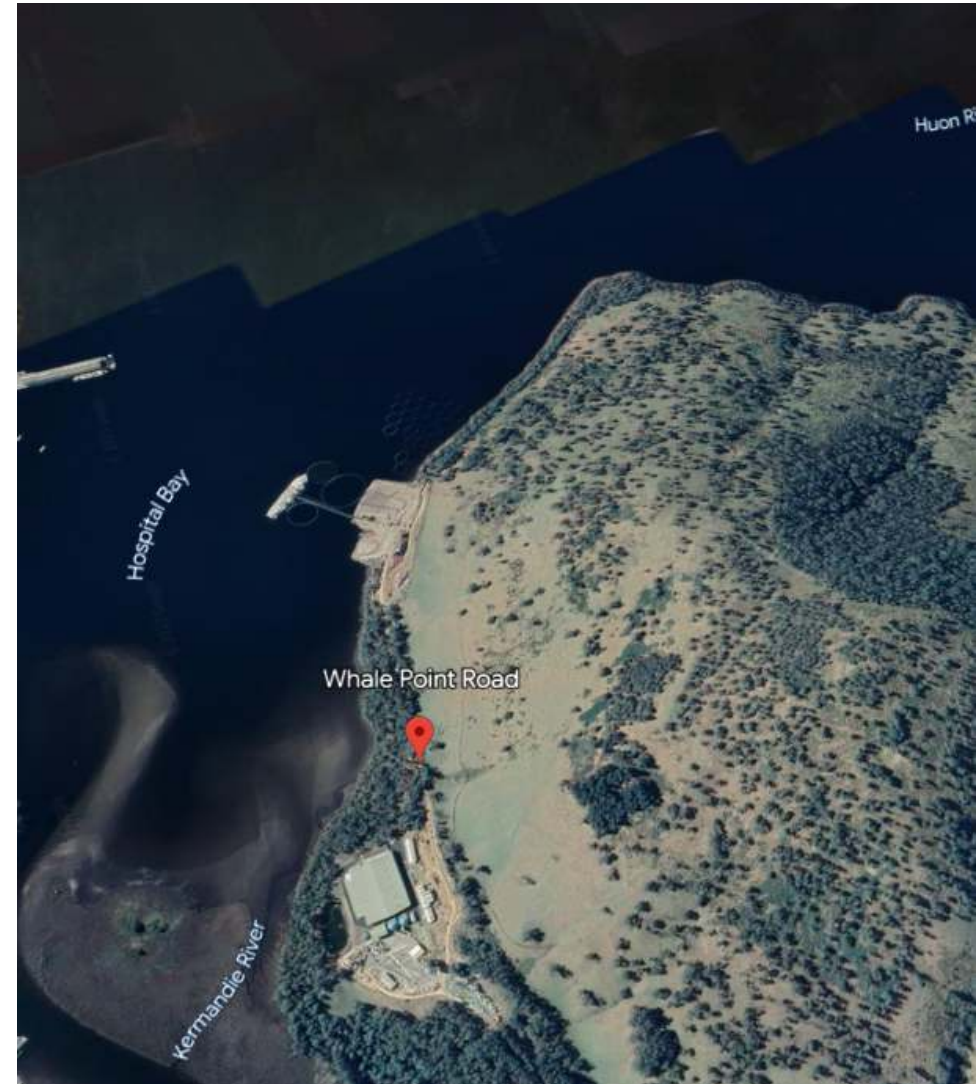
Whale Point – Option B & C

Environmental Values		Contaminant of concern		
		Shipwrights Pt	Location B	Location C
Ecological	Fish/Invertebrates	Medium	Medium	Medium
	Shellfish	Medium	Medium	Medium
	Marine mammals	Insignificant	Insignificant	Insignificant
	Aquatic plants	Low	Low	Low
Recreation	Primary	Low	Low	Low
	Secondary	Low	Low	Low
	Aesthetic	Low	Low	Low
Industrial	Marine farming	Low	Low	Low
Cultural	Aboriginal Culture	Insignificant	Insignificant	Insignificant

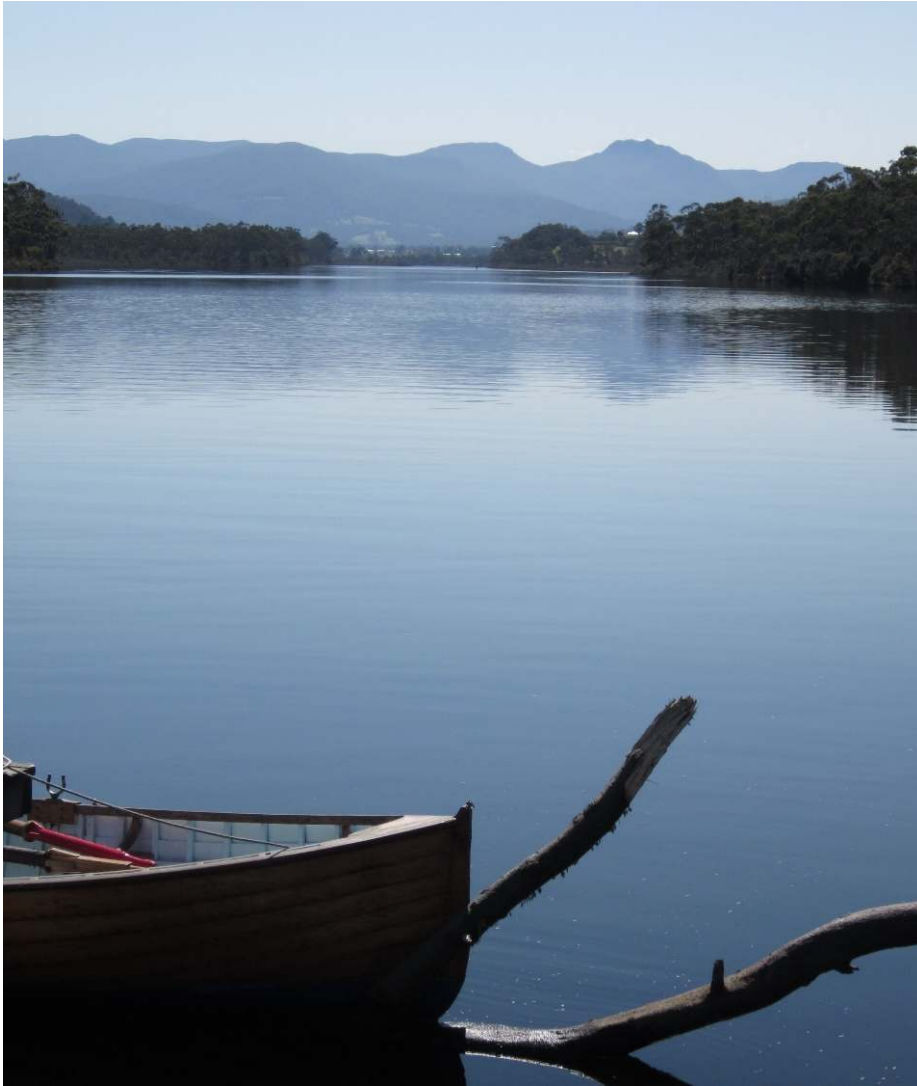
- Location B & C provide better dilution but are closer to aquaculture leases – same overall risk.
- Aquaculture leases
 - Shipwrights Pt – 2,000m
 - Whale Pt – B – 500m
 - Whale Pt – C – 585m
- Chlorine toxicant
 - No impact on transitory species due to batch discharge (10% of time)
 - Potential impact on aquaculture cages.

Whale Point – Pipeline on land

- Pipeline to Whale Point will cross identified Threatened Species Layer
- Approved route to Shipwrights Pt originally identified the same issue but we were able to re-route via the road to avoid Threatened Species
- Whale Point – unable to avoid threaten species layer
- Investigations continue



Next Steps



Marine assessments have indicated an acceptable environmental outcome can be achieved, however further engagement and investigations are still required for the following:

- Additional nutrient load near Aquaculture facilities

Investigations for the construction of the pipeline on land at Whale Point are required, including:

- Threatened species/vegetation
- Aboriginal Heritage

Community consultation

- In depth consultation with the local community and key stakeholders will be undertaken.
- The community will be informed throughout our investigations.
- Consultation will take place via face-to-face meetings, community drop-in sessions, local newspaper and letterbox drops.
- We will set a clear expectation on timelines, associated environmental risks and outcomes.

