

# Geeveston Outfall Relocation

---

Community Update

19 September 2022



# Introduction

- Acknowledgment of Country
- TasWater Representatives
  - Manager Capital Engagement
  - Capital Engagement Specialist
  - Leader of Environmental Performance
  - Project Development Manager
  - Project Delivery Manager

# Agenda

- Scope of works
- Background information
- Project development
- Environmental research
- Current stage of the project and delivery timeframe
- Questions and answers session?

## Background information

A commitment to the Environmental Protection Authority (EPA) was made in 2016 to relocate the outfall.

- The existing outfall extends North from the sewage treatment plant and discharges into the Kermandie River.
- The Kermandie River provides inadequate dilution and mixing for the volume of treated effluent, particularly in the summer months when river flow is at its lowest.
- A range of studies and investigation with ambient monitoring and mixing zone modelling was undertaken prior to EPA approval.
- The Geeveston STP is licenced to discharge 300 kL of treated effluent per day (average dry weather flow)
- Only treated effluent is discharged

**This project will deliver a positive environmental result for  
the Kermandie River and Hospital Bay**

# Project Development



- Alternatives considered – reuse scheme, hospital bay, whale point, full STP upgrade
- Shipwrights Point was approved by the Environmental Protection Authority as the new discharge point in 2019
- Stakeholder engagement was undertaken with Geeveston Progress Association, Huon Yacht Club, HVC, DSG and EPA- throughout 2019 and 2020

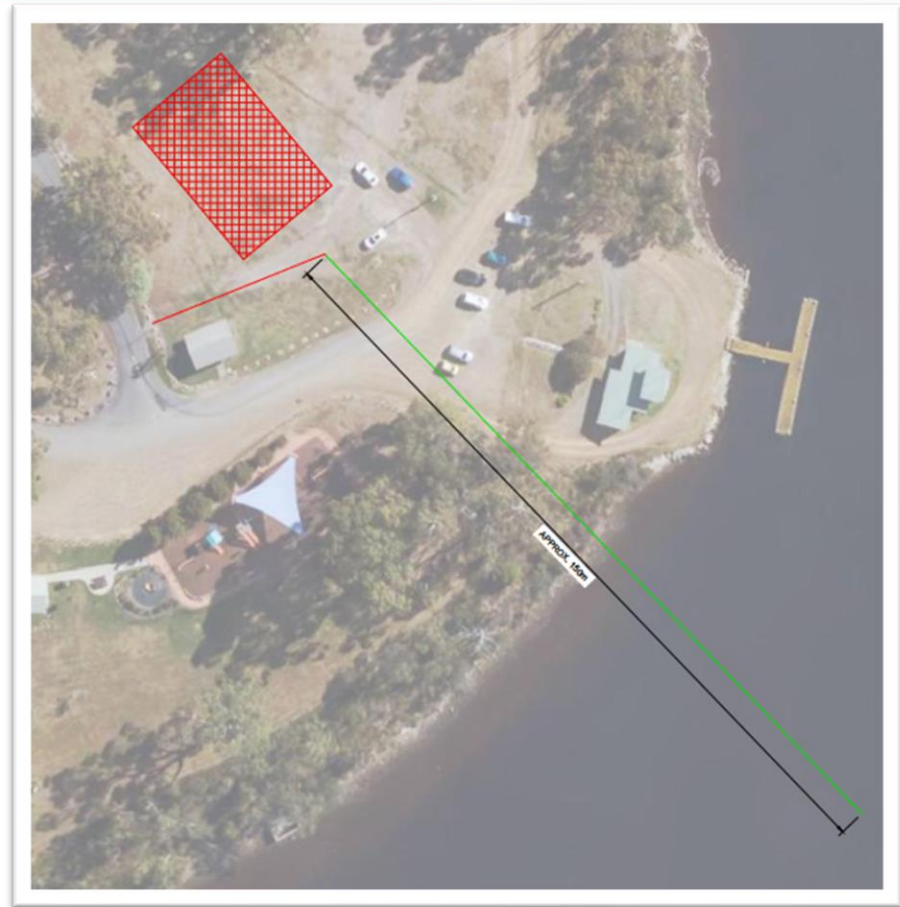
# Scope of works

- Construct 4.3km buried pressure pipeline from Geeveston Sewage Treatment Plant to Shipwrights Point
- Construct a new pump station and emergency storage of 80 kl adjacent to the Geeveston STP
- Install a new marine effluent discharge outfall pipeline and diffuser from Shipwrights Point, 45 meters offshore, minimum 8m deep



# Environmental Considerations.

- Marine Solutions (2011)-  
Outfall investigation at Port  
Huon, Huon River
- GHD (2016)- Geeveston  
STP Mixing Zone  
Assessment Near Field  
Modelling
- Marine Solutions (2017) -  
Geeveston STP Ambient  
Monitoring Report
- Bonneville Consulting  
(2021) - Environmental Risk  
Assessment



**All studies indicate low risk to recreational activities or public health**

## Current Stage of the project and delivery timeframe

- The design is currently being finalised. We are working to ensure there is minimal disruption to the community and the environment during construction.
- Alignment of pipe will be under the southbound lane of Huon highway. Will impact traffic with short stop/go sections.
- Avoiding threatened vegetation communities which is also habitat for native fauna such as swift parrot.
- Pipeline will be constructed under the seabed.



# Questions?

